

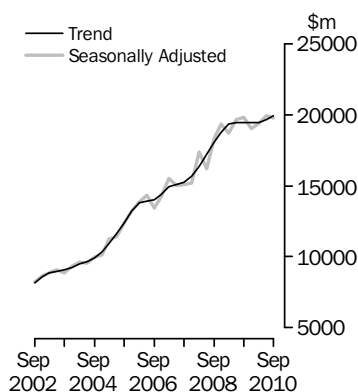
ENGINEERING CONSTRUCTION ACTIVITY

AUSTRALIA

EMBARGO: 11.30AM (CANBERRA TIME) WED 19 JAN 2011

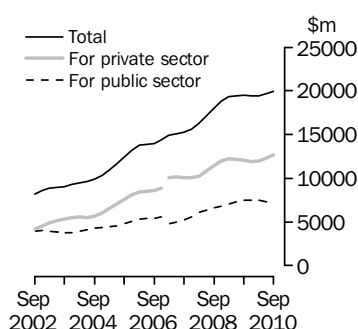
Value of work done

Chain volume measures



Value of work done

Chain volume measures
Trend estimates



Break in series between Dec 06 and Mar 07.

INQUIRIES

For further information about these and related statistics, contact the National Information and Referral Service on 1300 135 070 or Damian Sparkes on Adelaide (08) 8237 7646.

KEY FIGURES

	Sep qtr 10 \$m	Jun qtr 10 to Sep qtr 10 % change	Sep qtr 09 to Sep qtr 10 % change
TREND ESTIMATES (a)			
Value of work done			
For the private sector	12 663.0	2.5	5.2
For the public sector(b)	7 257.5	-1.0	-2.4
Total engineering construction	19 917.2	1.2	2.3

SEASONALLY ADJUSTED ESTIMATES (a)

Value of work done			
For the private sector	12 627.5	0.7	4.9
For the public sector(b)	7 132.7	-3.4	-8.5
Total engineering construction	19 760.2	-0.8	-0.4

(a) Chain volume measures, reference year 2008–09.

(b) Includes work done by the private sector for the public sector and work done by the public sector.

KEY POINTS

VALUE OF WORK DONE, CHAIN VOLUME MEASURES

TOTAL

- The trend estimate for the value of total engineering construction work done rose 1.2% in the September 2010 quarter.
- The seasonally adjusted estimate for the value of total engineering construction work done fell 0.8% in the September quarter, to \$19,760.2m.

PRIVATE SECTOR

- The trend estimate for the value of work done for the private sector rose 2.5% in the September quarter.
- The seasonally adjusted estimate for the value of work done for the private sector rose 0.7% in the September quarter, to \$12,627.5m.

PUBLIC SECTOR

- The trend estimate for the value of work done for the public sector fell 1.0% in the September quarter.
- The seasonally adjusted estimate for the value of work done for the public sector fell 3.4% in the September quarter, to \$7,132.7m.

VALUE OF WORK COMMENCED, CURRENT PRICES

- The value of work commenced in the September quarter was \$17,999.4m, an increase of 9.3% from the June 2010 quarter.

NOTES

FORTHCOMING ISSUES

ISSUE (Quarter)

RELEASE DATE

December 2010

5 April 2011

March 2011

6 July 2011

.....

ABOUT THIS ISSUE

This publication updates the preliminary estimates released in Construction Work Done, Australia (cat. no. 8755.0) on 24 November 2010.

CHANGES IN THIS ISSUE

A new base year, 2008–09, has been introduced into the chain volume estimates which has resulted in revisions to growth rates in subsequent periods. In addition, the chain volume estimates have been re-referenced to 2008–09, thereby preserving additivity in the quarters after the reference year. Re-referencing affects the levels of, but not the movements in, chain volume estimates.

SIGNIFICANT REVISIONS THIS QUARTER

Compared with the current price estimates in original terms published in the previous issue of this publication:

- The June quarter work done estimates have been revised upward by \$58.1m. These revisions occurred predominantly in the Oil, gas, coal and other minerals commodities.

.....

ABBREVIATIONS

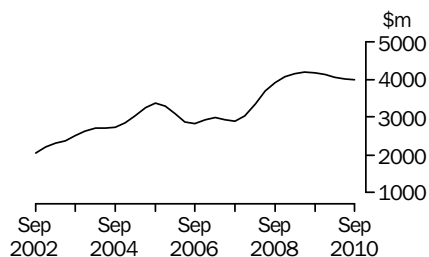
\$m	million dollars
ABN	Australian Business Number
ABS	Australian Bureau of Statistics
ACT	Australian Capital Territory
ANZSIC	Australian and New Zealand Standard Industrial Classification
ATO	Australian Taxation Office
Aust.	Australia
ECS	Engineering Construction Survey
NSW	New South Wales
NT	Northern Territory
qtr	quarter
Qld	Queensland
RSE	relative standard error
SA	South Australia
Tas.	Tasmania
TAU	type of activity unit
Vic.	Victoria
WA	Western Australia

Brian Pink
Australian Statistician

VALUE OF WORK DONE STATES AND TERRITORIES

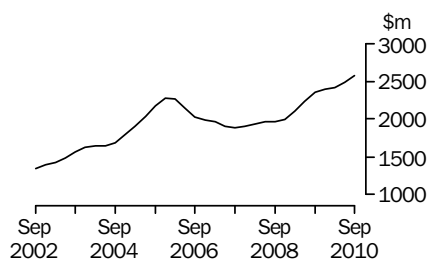
CHAIN VOLUME MEASURES—TREND ESTIMATES

NEW SOUTH WALES



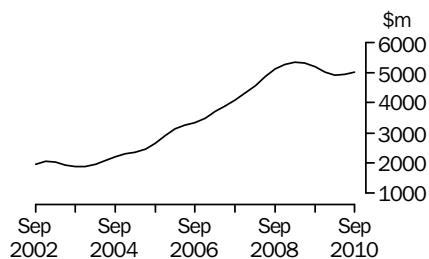
The trend estimate for the value of work done in New South Wales fell by 0.3% in the September quarter and has fallen for five quarters.

VICTORIA



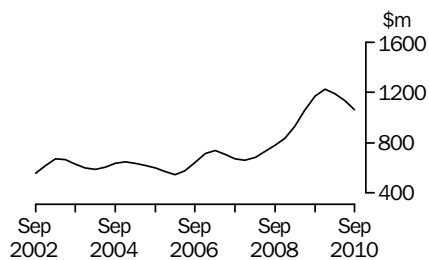
The trend estimate of the value of work done in Victoria rose 3.7% in the September quarter and has now risen for 12 quarters.

QUEENSLAND



The trend estimate for the value of work done in Queensland rose 1.6% in the September quarter and has now risen for two quarters.

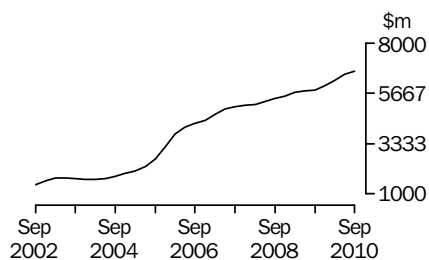
SOUTH AUSTRALIA



The trend estimate for the value of work done in South Australia fell by 6.1% in the September quarter and has fallen for three quarters.

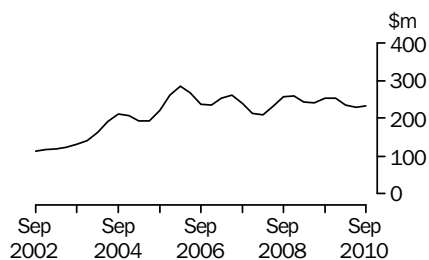
VALUE OF WORK DONE STATES AND TERRITORIES *continued*

WESTERN AUSTRALIA



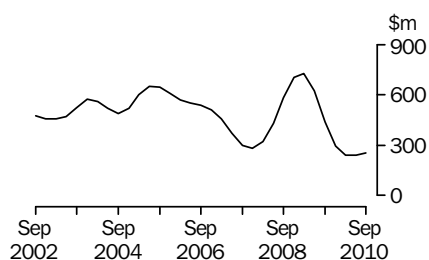
The trend estimate for the value of work done in Western Australia rose by 2.3% in the September quarter and has risen since June 2004.

TASMANIA



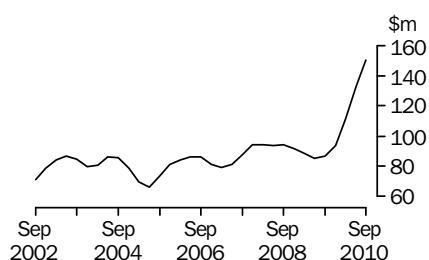
The trend estimate for the value of work done in Tasmania rose 1.8% in the September quarter following falls in the three previous quarters.

NORTHERN TERRITORY



The trend estimate for the value of work done in the Northern Territory increased by 5.9% in the September quarter following falls in the five previous quarters.

AUSTRALIAN CAPITAL TERRITORY



The trend estimate for the value of work done in the Australian Capital Territory rose by 12.8% in the September quarter and has risen for five quarters.

LIST OF TABLES

page

TABLES

1	Value of work done: chain volume measures	6
2	Value of work done: chain volume measures – change from previous period	7
3	Value of work done, states and territories: chain volume measures	8
4	Value of work done, states and territories: chain volume measures – change from previous period	9
5	Value of work done: current prices	10
6	Value of work done: current prices – change from previous period	11
7	Value of work done, states and territories: current prices	12
8	Value of work done, states and territories: current prices – change from previous period	13
9	Activity, states and territories: original	14
10	Activity, states and territories: original – change from previous period	15
11	Activity, by type: original	16
12	Work commenced by the private sector, by type: original	18
13	Work done by the private sector, by type: original	20
14	Work yet to be done by the private sector, by type: original	22
15	Activity by the public sector, by type: original	24
16	Activity for the public sector, by type: original	26
17	Activity, by type: original – New South Wales	28
18	Activity, by type: original – Victoria	29
19	Activity, by type: original – Queensland	30
20	Activity, by type: original – South Australia	31
21	Activity, by type: original – Western Australia	32
22	Activity, by type: original – Tasmania	33
23	Activity, by type: original – Northern Territory	34
24	Activity, by type: original – Australian Capital Territory	35
25	Value of work done by the private sector, states and territories: original	36
26	Value of work done by the public sector, states and territories: original	37
27	Value of work done for the public sector, states and territories: original	38
28	Relative standard errors by sector – Australia	39
29	Relative standard errors, states and territories, by type of work	40

VALUE OF WORK DONE: Chain volume measures (a)

BY THE PRIVATE SECTOR

<i>Period</i>	<i>For the private sector</i>	<i>For the public sector</i>	<i>Total</i>	<i>By the public sector</i>	<i>Total for the public sector (b)</i>	<i>Total</i>
	\$m	\$m	\$m	\$m	\$m	\$m

ORIGINAL

2007-08	40 813.9	11 334.5	52 146.9	11 699.4	23 039.3	63 851.6
2008-09	48 316.1	14 360.8	62 676.9	13 357.0	27 717.8	76 033.9
2009-10	48 231.5	14 787.9	63 019.4	15 173.5	29 961.3	78 192.8
2009						
June	13 253.4	3 824.6	17 077.8	3 918.9	7 745.1	20 998.1
September	11 887.9	3 921.7	15 809.6	3 537.6	7 459.3	19 347.2
December	12 282.8	3 793.9	16 076.7	3 611.3	7 405.2	19 688.0
2010						
March	10 803.2	3 318.2	14 121.4	3 703.9	7 022.1	17 825.3
June	13 257.7	3 754.0	17 011.7	4 320.6	8 074.7	21 332.3
September	12 544.6	3 653.7	16 198.2	3 202.8	6 856.5	19 401.0

SEASONALLY ADJUSTED

2009						
June	12 557.0	3 687.0	16 243.9	3 406.6	7 093.3	19 648.9
September	12 035.0	3 891.5	15 926.5	3 904.0	7 795.5	19 830.5
December	11 769.3	3 707.3	15 476.6	3 535.9	7 243.2	19 012.5
2010						
March	11 886.5	3 558.5	15 445.0	3 977.9	7 536.4	19 422.9
June	12 540.6	3 630.5	16 171.2	3 755.7	7 386.3	19 926.9
September	12 627.5	3 611.8	16 239.3	3 520.9	7 132.7	19 760.2

TREND

2009						
June	12 192.7	3 784.8	15 977.9	3 483.6	7 268.1	19 460.4
September	12 031.4	3 788.5	15 820.0	3 649.9	7 438.2	19 469.3
December	11 926.3	3 714.2	15 640.4	3 798.2	7 512.4	19 438.6
2010						
March	12 025.6	3 638.2	15 664.1	3 799.6	7 437.7	19 463.5
June	12 348.1	3 596.2	15 944.5	3 732.8	7 329.2	19 677.8
September	12 663.0	3 602.7	16 264.2	3 656.6	7 257.5	19 917.2

(a) Reference year for chain volume measures is 2008-09. Refer to paragraphs 25-29 of the Explanatory Notes.

(b) Includes work done by the private sector for the public sector and work done by the public sector.

VALUE OF WORK DONE: **Chain volume measures**(a)—Change from previous period

BY THE PRIVATE SECTOR

<i>Period</i>	<i>For the private sector</i>	<i>For the public sector</i>	<i>Total</i>	<i>By the public sector</i>	<i>Total for the public sector(b)</i>	<i>Total</i>
	%	%	%	%	%	%

ORIGINAL

2007–08	8.1	39.9	13.8	–5.1	12.6	9.7
2008–09	18.4	26.7	20.2	14.2	20.3	19.1
2009–10	–0.2	3.0	0.5	13.6	8.1	2.8
2009						
June	24.5	8.2	20.4	30.8	18.6	22.2
September	–10.3	2.5	–7.4	–9.7	–3.7	–7.9
December	3.3	–3.3	1.7	2.1	–0.7	1.8
2010						
March	–12.0	–12.5	–12.2	2.6	–5.2	–9.5
June	22.7	13.1	20.5	16.7	15.0	19.7
September	–5.4	–2.7	–4.8	–25.9	–15.1	–9.1

SEASONALLY ADJUSTED

2009						
June	7.2	–2.1	4.9	5.6	1.5	5.1
September	–4.2	5.5	–2.0	14.6	9.9	0.9
December	–2.2	–4.7	–2.8	–9.4	–7.1	–4.1
2010						
March	1.0	–4.0	–0.2	12.5	4.0	2.2
June	5.5	2.0	4.7	–5.6	–2.0	2.6
September	0.7	–0.5	0.4	–6.3	–3.4	–0.8

TREND

2009						
June	–0.5	2.3	0.1	3.0	2.6	0.6
September	–1.3	0.1	–1.0	4.8	2.3	—
December	–0.9	–2.0	–1.1	4.1	1.0	–0.2
2010						
March	0.8	–2.0	0.2	—	–1.0	0.1
June	2.7	–1.2	1.8	–1.8	–1.5	1.1
September	2.5	0.2	2.0	–2.0	–1.0	1.2

— nil or rounded to zero (including null cells)

(a) Reference year for chain volume measures is 2008–09. Refer to paragraphs 25–29 of the Explanatory Notes.

(b) Includes work done by the private sector for the public sector and work done by the public sector.

VALUE OF WORK DONE, States and territories: Chain volume measures(a)

<i>Period</i>	<i>NSW</i>	<i>Vic.</i>	<i>Qld</i>	<i>SA</i>	<i>WA</i>	<i>Tas.</i>	<i>NT</i>	<i>ACT</i>	<i>Aust.</i>
	\$m	\$m	\$m	\$m	\$m	\$m	\$m	\$m	\$m
ORIGINAL									
2007–08	12 745.0	7 614.2	17 705.4	2 730.7	20 467.3	867.3	1 343.4	381.9	63 851.6
2008–09	16 315.8	8 346.0	21 068.9	3 618.0	22 664.2	1 000.1	2 657.2	363.8	76 033.9
2009–10	16 380.8	9 641.6	19 977.7	4 746.2	24 868.4	974.7	1 190.6	412.8	78 192.8
2009									
June	4 609.2	2 447.6	5 522.3	1 222.8	6 171.3	269.3	^ 658.6	^ 93.9	20 998.1
September	4 058.4	2 325.3	5 336.8	1 042.1	5 866.8	223.3	^ 414.4	80.1	19 347.2
December	4 020.3	2 480.3	5 086.6	1 272.3	6 169.2	260.5	305.3	93.3	19 688.0
2010									
March	3 889.3	2 151.0	4 549.9	1 130.7	5 601.0	239.8	154.7	108.9	17 825.3
June	4 412.7	2 685.1	5 004.4	1 301.1	7 231.4	251.1	316.2	130.4	21 332.3
September	3 814.6	2 588.9	5 198.8	921.8	6 268.3	203.5	240.7	164.5	19 401.0
SEASONALLY ADJUSTED									
2009									
June	4 187.9	2 281.5	5 385.6	1 110.4	6 060.2	235.6	^ 623.9	^ 90.8	19 648.9
September	4 258.2	2 379.1	5 248.5	1 168.2	5 923.4	274.3	^ 419.5	80.3	19 830.5
December	4 064.0	2 434.3	4 928.8	1 231.0	5 782.1	258.1	299.4	95.2	19 012.5
2010									
March	4 047.3	2 334.3	4 919.4	1 188.6	6 095.8	220.8	173.2	112.1	19 422.9
June	4 011.4	2 493.9	4 881.1	1 158.4	7 067.1	221.6	298.5	125.1	19 926.9
September	3 997.5	2 632.2	5 102.1	1 028.7	6 300.8	246.1	248.5	164.8	19 760.2
TREND									
2009									
June	4 182.9	2 238.6	5 314.5	1 058.5	5 775.4	241.8	622.3	85.4	19 460.4
September	4 174.8	2 356.7	5 186.0	1 170.0	5 829.3	252.9	436.7	86.5	19 469.3
December	4 125.4	2 396.1	5 017.1	1 223.1	6 009.5	252.2	293.0	93.7	19 438.6
2010									
March	4 049.1	2 417.4	4 918.2	1 191.2	6 259.2	235.2	242.5	111.1	19 463.5
June	4 009.3	2 487.9	4 940.3	1 134.7	6 537.7	228.1	241.8	133.0	19 677.8
September	3 998.8	2 580.6	5 020.8	1 065.3	6 686.7	232.3	256.1	150.1	19 917.2

^ estimate has a relative standard error of 10% to less than 25% and should be used with caution

(a) Reference year for chain volume measures is 2008–09. Refer to paragraphs 25–29 of the Explanatory Notes.

VALUE OF WORK DONE, States and territories: Chain volume measures(a)—Change from previous period

	NSW	Vic.	Qld	SA	WA	Tas.	NT	ACT	Aust.
Period	%	%	%	%	%	%	%	%	%
ORIGINAL									
2007–08	7.9	-3.9	22.3	-3.9	14.2	-10.9	-29.4	20.3	9.7
2008–09	28.0	9.6	19.0	32.5	10.7	15.3	97.8	-4.8	19.1
2009–10	0.4	15.5	-5.2	31.2	9.7	-2.5	-55.2	13.5	2.8
2009									
June	19.0	30.9	13.8	53.4	29.0	20.2	-5.0	10.4	22.2
September	-11.9	-5.0	-3.4	-14.8	-4.9	-17.1	-37.1	-14.7	-7.9
December	-0.9	6.7	-4.7	22.1	5.2	16.7	-26.3	16.5	1.8
2010									
March	-3.3	-13.3	-10.6	-11.1	-9.2	-8.0	-49.3	16.7	-9.5
June	13.5	24.8	10.0	15.1	29.1	4.7	104.4	19.7	19.7
September	-13.6	-3.6	3.9	-29.1	-13.3	-19.0	-23.9	26.1	-9.1
SEASONALLY ADJUSTED									
2009									
June	3.6	13.1	3.3	30.7	15.9	14.9	-17.0	5.5	5.1
September	1.7	4.3	-2.5	5.2	-2.3	16.4	-32.8	-11.5	0.9
December	-4.6	2.3	-6.1	5.4	-2.4	-5.9	-28.6	18.5	-4.1
2010									
March	-0.4	-4.1	-0.2	-3.4	5.4	-14.5	-42.1	17.8	2.2
June	-0.9	6.8	-0.8	-2.5	15.9	0.4	72.4	11.6	2.6
September	-0.3	5.5	4.5	-11.2	-10.8	11.1	-16.8	31.7	-0.8
TREND									
2009									
June	0.7	6.3	-0.7	13.4	1.3	-0.8	-14.4	-3.8	0.6
September	-0.2	5.3	-2.4	10.5	0.9	4.6	-29.8	1.3	—
December	-1.2	1.7	-3.3	4.5	3.1	-0.3	-32.9	8.3	-0.2
2010									
March	-1.9	0.9	-2.0	-2.6	4.2	-6.8	-17.2	18.5	0.1
June	-1.0	2.9	0.4	-4.7	4.4	-3.0	-0.3	19.8	1.1
September	-0.3	3.7	1.6	-6.1	2.3	1.8	5.9	12.8	1.2

— nil or rounded to zero (including null cells)

(a) Reference year for chain volume measures is 2008–09. Refer to paragraphs 25–29 of the Explanatory Notes.

VALUE OF WORK DONE: Current prices

BY THE PRIVATE SECTOR

<i>Period</i>	<i>For the private sector</i>	<i>For the public sector</i>	<i>Total</i>	<i>By the public sector</i>	<i>Total for the public sector(a)</i>	<i>Total</i>
	\$m	\$m	\$m	\$m	\$m	\$m

ORIGINAL

2007-08	38 956.6	10 846.1	49 802.7	11 297.1	22 143.2	61 099.8
2008-09	48 316.2	14 360.8	62 676.9	13 357.0	27 717.8	76 033.9
2009-10	47 111.9	14 699.7	61 811.6	14 919.6	29 619.3	76 731.2
2009						
June	13 016.1	3 773.2	16 789.3	3 851.0	7 624.2	20 640.3
September	11 710.1	3 870.8	15 580.9	3 459.0	7 329.8	19 039.9
December	11 991.4	3 762.1	15 753.4	3 537.8	7 299.9	19 291.2
2010						
March	10 503.8	3 303.1	13 806.9	3 640.8	6 943.9	17 447.7
June	12 906.7	3 763.7	16 670.4	4 282.0	8 045.7	20 952.4
September	12 345.9	3 694.6	16 040.5	3 188.6	6 883.1	19 229.0

SEASONALLY ADJUSTED

2009						
June	12 307.7	3 642.6	15 950.3	3 347.6	6 990.2	19 297.9
September	11 842.3	3 843.3	15 685.5	3 824.1	7 667.4	19 509.6
December	11 487.6	3 677.9	15 165.5	3 473.3	7 151.2	18 638.9
2010						
March	11 561.3	3 543.3	15 104.6	3 922.7	7 466.0	19 027.3
June	12 216.8	3 644.1	15 860.9	3 735.3	7 379.4	19 596.2
September	12 435.6	3 654.5	16 090.1	3 517.9	7 172.4	19 608.0

TREND

2009						
June	12 023.9	3 749.9	15 773.8	3 434.6	7 184.6	19 208.5
September	11 784.0	3 743.4	15 527.4	3 578.3	7 321.8	19 105.7
December	11 638.6	3 679.3	15 317.9	3 728.1	7 407.4	19 046.0
2010						
March	11 721.4	3 626.5	15 347.9	3 751.2	7 377.8	19 099.1
June	12 057.0	3 609.5	15 666.4	3 707.6	7 317.1	19 374.0
September	12 440.6	3 650.0	16 090.6	3 648.0	7 298.0	19 738.6

(a) Includes work done by the private sector for the public sector and work done by the public sector.

VALUE OF WORK DONE: **Current prices**—Change from previous period

BY THE PRIVATE SECTOR

<i>Period</i>	<i>For the private sector</i>	<i>For the public sector</i>	<i>Total</i>	<i>By the public sector</i>	<i>Total for the public sector(a)</i>	<i>Total</i>
	%	%	%	%	%	%

ORIGINAL

2007–08	14.9	47.3	20.7	–0.7	18.2	16.1
2008–09	24.0	32.4	25.9	18.2	25.2	24.4
2009–10	–2.5	2.4	–1.4	11.7	6.9	0.9
2009						
June	22.6	6.8	18.6	28.3	16.7	20.3
September	–10.0	2.6	–7.2	–10.2	–3.9	–7.8
December	2.4	–2.8	1.1	2.3	–0.4	1.3
2010						
March	–12.4	–12.2	–12.4	2.9	–4.9	–9.6
June	22.9	13.9	20.7	17.6	15.9	20.1
September	–4.3	–1.8	–3.8	–25.5	–14.4	–8.2

SEASONALLY ADJUSTED

2009						
June	5.6	–3.2	3.4	3.7	—	3.5
September	–3.8	5.5	–1.7	14.2	9.7	1.1
December	–3.0	–4.3	–3.3	–9.2	–6.7	–4.5
2010						
March	0.6	–3.7	–0.4	12.9	4.4	2.1
June	5.7	2.8	5.0	–4.8	–1.2	3.0
September	1.8	0.3	1.4	–5.8	–2.8	0.1

TREND

2009						
June	–1.7	1.4	–1.0	1.8	1.6	–0.5
September	–2.0	–0.2	–1.6	4.2	1.9	–0.5
December	–1.2	–1.7	–1.3	4.2	1.2	–0.3
2010						
March	0.7	–1.4	0.2	0.6	–0.4	0.3
June	2.9	–0.5	2.1	–1.2	–0.8	1.4
September	3.2	1.1	2.7	–1.6	–0.3	1.9

— nil or rounded to zero (including null cells)

(a) Includes work done by the private sector for the public sector and work done by the public sector.

VALUE OF WORK DONE, States and territories: **Current prices**

	NSW	Vic.	Qld	SA	WA	Tas.	NT	ACT	Aust.
<i>Period</i>	\$m	\$m	\$m	\$m	\$m	\$m	\$m	\$m	\$m
ORIGINAL									
2007-08	12 341.7	7 324.2	16 786.6	2 601.5	19 559.2	837.2	1 279.6	369.8	61 099.8
2008-09	16 315.8	8 346.0	21 068.9	3 618.0	22 664.2	1 000.1	2 657.2	363.8	76 033.9
2009-10	16 136.9	9 540.9	19 578.7	4 698.9	24 238.1	964.1	1 169.3	404.4	76 731.2
2009									
June	4 538.1	2 414.4	5 421.3	1 203.9	6 056.2	266.1	^ 648.0	^ 92.3	20 640.3
September	4 006.1	2 293.3	5 240.4	1 027.7	5 765.2	219.6	^ 409.2	78.4	19 039.9
December	3 954.4	2 449.3	4 978.9	1 252.6	6 010.2	255.2	299.4	91.3	19 291.2
2010									
March	3 820.0	2 125.8	4 451.0	1 116.9	5 438.8	237.0	151.5	106.5	17 447.7
June	4 356.3	2 672.5	4 908.4	1 301.7	7 023.9	252.3	309.1	128.3	20 952.4
September	3 794.0	2 594.3	5 148.7	925.3	6 157.8	206.3	239.3	163.3	19 229.0
SEASONALLY ADJUSTED									
2009									
June	4 123.9	2 245.1	5 287.2	1 081.8	5 927.5	235.8	^ 612.6	^ 89.3	19 297.9
September	4 206.4	2 342.3	5 154.7	1 143.5	5 811.3	273.1	^ 411.1	78.4	19 509.6
December	4 001.1	2 401.6	4 825.5	1 209.5	5 631.7	256.0	290.2	92.8	18 638.9
2010									
March	3 979.4	2 306.1	4 813.6	1 175.7	5 923.7	221.0	167.3	109.4	19 027.3
June	3 964.7	2 481.9	4 789.0	1 162.4	6 872.9	225.5	287.5	122.7	19 596.2
September	3 980.6	2 637.3	5 054.2	1 035.5	6 197.4	252.7	243.3	163.1	19 608.0
TREND									
2009									
June	4 141.0	2 213.0	5 240.9	1 037.7	5 679.7	242.2	615.3	84.4	19 208.5
September	4 113.7	2 319.5	5 081.9	1 143.6	5 696.2	251.6	426.7	84.5	19 105.7
December	4 058.8	2 360.4	4 908.8	1 201.7	5 852.9	250.7	284.1	91.2	19 046.0
2010									
March	3 990.4	2 393.3	4 818.5	1 180.7	6 091.3	235.8	234.4	108.4	19 099.1
June	3 964.0	2 476.2	4 856.0	1 134.3	6 374.5	231.5	233.9	130.6	19 374.0
September	3 971.2	2 575.6	4 958.1	1 073.7	6 546.7	238.3	249.1	149.4	19 738.6

^ estimate has a relative standard error of 10% to less than 25% and should be used with caution

VALUE OF WORK DONE, States and territories: **Current prices**—Change from previous period

	NSW	Vic.	Qld	SA	WA	Tas.	NT	ACT	Aust.
<i>Period</i>	%	%	%	%	%	%	%	%	%
ORIGINAL									
2007–08	14.0	1.5	29.7	1.7	20.5	-5.5	-24.7	27.1	16.1
2008–09	32.2	14.0	25.5	39.1	15.9	19.5	107.7	-1.6	24.4
2009–10	-1.1	14.3	-7.1	29.9	6.9	-3.6	-56.0	11.2	0.9
2009									
June	17.1	28.8	12.2	50.2	26.9	18.3	-6.2	8.2	20.3
September	-11.7	-5.0	-3.3	-14.6	-4.8	-17.5	-36.8	-15.1	-7.8
December	-1.3	6.8	-5.0	21.9	4.2	16.2	-26.8	16.5	1.3
2010									
March	-3.4	-13.2	-10.6	-10.8	-9.5	-7.1	-49.4	16.7	-9.6
June	14.0	25.7	10.3	16.5	29.1	6.4	104.0	20.4	20.1
September	-12.9	-2.9	4.9	-28.9	-12.3	-18.2	-22.6	27.3	-8.2
SEASONALLY ADJUSTED									
2009									
June	2.0	11.3	1.9	28.3	14.1	13.2	-18.4	3.3	3.5
September	2.0	4.3	-2.5	5.7	-2.0	15.8	-32.9	-12.2	1.1
December	-4.9	2.5	-6.4	5.8	-3.1	-6.3	-29.4	18.4	-4.5
2010									
March	-0.5	-4.0	-0.2	-2.8	5.2	-13.7	-42.3	17.8	2.1
June	-0.4	7.6	-0.5	-1.1	16.0	2.0	71.8	12.2	3.0
September	0.4	6.3	5.5	-10.9	-9.8	12.1	-15.4	33.0	0.1
TREND									
2009									
June	-0.1	5.3	-1.9	12.3	0.2	-1.8	-15.5	-5.2	-0.5
September	-0.7	4.8	-3.0	10.2	0.3	3.9	-30.7	0.2	-0.5
December	-1.3	1.8	-3.4	5.1	2.8	-0.3	-33.4	7.9	-0.3
2010									
March	-1.7	1.4	-1.8	-1.7	4.1	-6.0	-17.5	18.8	0.3
June	-0.7	3.5	0.8	-3.9	4.6	-1.8	-0.2	20.5	1.4
September	0.2	4.0	2.1	-5.3	2.7	2.9	6.5	14.4	1.9

ACTIVITY, States and territories: **Original**

	NSW	Vic.	Qld	SA	WA	Tas.	NT	ACT	Aust.
<i>Period</i>	\$m	\$m	\$m	\$m	\$m	\$m	\$m	\$m	\$m
.....									
VALUE OF WORK COMMENCED DURING PERIOD									
2007-08	16 734.7	8 121.8	20 637.4	2 984.7	28 343.2	908.4	2 140.2	401.6	80 271.9
2008-09	15 640.2	8 623.1	22 131.3	5 397.7	18 982.7	1 290.6	1 798.7	607.1	74 471.5
2009-10	16 215.4	12 761.5	17 625.1	3 880.3	55 137.9	919.0	1 539.1	582.9	108 661.2
2009									
June	4 971.8	2 229.7	4 914.1	2 503.8	2 897.8	574.3	^ 615.1	*128.8	18 835.4
September	4 040.6	2 242.9	4 274.6	931.8	4 221.7	176.6	^ 287.5	356.7	16 532.5
December	3 627.5	5 248.9	4 402.4	^ 824.8	43 931.6	270.8	343.5	75.2	58 724.6
2010									
March	3 940.1	2 531.8	4 785.1	826.4	4 341.7	272.2	149.4	84.6	16 931.3
June	4 607.2	2 737.9	4 162.9	1 297.3	2 642.9	199.4	758.8	66.5	16 472.8
September	4 494.3	2 856.7	4 052.5	706.0	5 397.9	216.1	188.2	87.6	17 999.4
.....									
VALUE OF WORK DONE DURING PERIOD									
2007-08	12 341.7	7 324.2	16 786.6	2 601.5	19 559.2	837.2	1 279.6	369.8	61 099.8
2008-09	16 315.8	8 346.0	21 068.9	3 618.0	22 664.2	1 000.1	2 657.2	363.8	76 033.9
2009-10	16 136.9	9 540.9	19 578.7	4 698.9	24 238.1	964.1	1 169.3	404.4	76 731.2
2009									
June	4 538.1	2 414.4	5 421.3	1 203.9	6 056.2	266.1	^ 648.0	^ 92.3	20 640.3
September	4 006.1	2 293.3	5 240.4	1 027.7	5 765.2	219.6	^ 409.2	78.4	19 039.9
December	3 954.4	2 449.3	4 978.9	1 252.6	6 010.2	255.2	299.4	91.3	19 291.2
2010									
March	3 820.0	2 125.8	4 451.0	1 116.9	5 438.8	237.0	151.5	106.5	17 447.7
June	4 356.3	2 672.5	4 908.4	1 301.7	7 023.9	252.3	309.1	128.3	20 952.4
September	3 794.0	2 594.3	5 148.7	925.3	6 157.8	206.3	239.3	163.3	19 229.0
.....									
VALUE OF WORK YET TO BE DONE									
2007-08	7 451.6	3 508.8	14 047.8	1 365.7	24 201.7	206.2	1 275.6	33.0	52 090.4
2008-09	6 304.7	2 806.3	13 445.0	2 556.7	20 578.0	694.1	496.4	185.6	47 066.8
2009-10	7 252.8	6 440.7	12 640.4	1 598.3	52 243.1	786.6	656.3	441.3	82 059.4
2009									
June	6 304.7	2 806.3	13 445.0	2 556.7	20 578.0	694.1	496.4	185.6	47 066.8
September	7 033.1	3 190.8	13 476.7	2 610.5	19 461.5	674.9	303.7	463.5	47 214.7
December	6 522.9	6 147.9	13 727.0	1 917.7	57 549.0	717.4	371.6	548.0	87 501.6
2010									
March	6 954.7	6 352.3	13 371.3	1 573.1	56 339.1	801.1	351.2	497.6	86 240.4
June	7 252.8	6 440.7	12 640.4	1 598.3	52 243.1	786.6	656.3	441.3	82 059.4
September	7 680.0	8 390.8	11 770.9	1 468.7	51 687.4	930.5	661.3	528.8	83 118.3

^ estimate has a relative standard error of 10% to less than 25% and should be used with caution

* estimate has a relative standard error of 25% to 50% and should be used with caution

	NSW	Vic.	Qld	SA	WA	Tas.	NT	ACT	Aust.
Period	%	%	%	%	%	%	%	%	%
VALUE OF WORK COMMENCED DURING PERIOD									
2007-08	44.2	26.2	7.1	-11.1	84.7	18.6	56.9	44.6	37.4
2008-09	-6.5	6.2	7.2	80.8	-33.0	42.1	-16.0	51.2	-7.2
2009-10	3.7	48.0	-20.4	-28.1	190.5	-28.8	-14.4	-4.0	45.9
2009									
June	38.2	37.9	80.5	170.1	-37.4	287.2	17.4	22.1	32.0
September	-18.7	0.6	-13.0	-62.8	45.7	-69.2	-53.3	176.9	-12.2
December	-10.2	134.0	3.0	-11.5	940.6	53.3	19.5	-78.9	255.2
2010									
March	8.6	-51.8	8.7	0.2	-90.1	0.5	-56.5	12.5	-71.2
June	16.9	8.1	-13.0	57.0	-39.1	-26.8	407.8	-21.4	-2.7
September	-2.5	4.3	-2.7	-45.6	104.2	8.4	-75.2	31.8	9.3
VALUE OF WORK DONE DURING PERIOD									
2007-08	14.0	1.5	29.7	1.7	20.5	-5.5	-24.7	27.1	16.1
2008-09	32.2	14.0	25.5	39.1	15.9	19.5	107.7	-1.6	24.4
2009-10	-1.1	14.3	-7.1	29.9	6.9	-3.6	-56.0	11.2	0.9
2009									
June	17.1	28.8	12.2	50.2	26.9	18.3	-6.2	8.2	20.3
September	-11.7	-5.0	-3.3	-14.6	-4.8	-17.5	-36.8	-15.1	-7.8
December	-1.3	6.8	-5.0	21.9	4.2	16.2	-26.8	16.5	1.3
2010									
March	-3.4	-13.2	-10.6	-10.8	-9.5	-7.1	-49.4	16.7	-9.6
June	14.0	25.7	10.3	16.5	29.1	6.4	104.0	20.4	20.1
September	-12.9	-2.9	4.9	-28.9	-12.3	-18.2	-22.6	27.3	-8.2
VALUE OF WORK YET TO BE DONE									
2007-08	123.9	34.9	18.3	-7.6	89.8	49.3	300.8	98.0	60.2
2008-09	-15.4	-20.0	-4.3	87.2	-15.0	236.6	-61.1	462.0	-9.6
2009-10	15.0	129.5	-6.0	-37.5	153.9	13.3	32.2	137.8	74.3
2009									
June	1.0	-4.9	-4.4	52.4	-12.0	79.8	33.6	2.6	-4.4
September	11.6	13.7	0.2	2.1	-5.4	-2.8	-38.8	149.7	0.3
December	-7.3	92.7	1.9	-26.5	195.7	6.3	22.4	18.2	85.3
2010									
March	6.6	3.3	-2.6	-18.0	-2.1	11.7	-5.5	-9.2	-1.4
June	4.3	1.4	-5.5	1.6	-7.3	-1.8	86.9	-11.3	-4.8
September	5.9	30.3	-6.9	-8.1	-1.1	18.3	0.8	19.8	1.3

	Roads, highways and subdivisions	Bridges	Railways	Harbours	Water storage and supply	Sewerage and drainage	Electricity generation, transmission and distribution	Pipelines	Recreation
Period	\$m	\$m	\$m	\$m	\$m	\$m	\$m	\$m	\$m
VALUE OF WORK COMMENCED DURING PERIOD									
2007-08	14 377.1	991.9	3 022.5	2 298.3	5 747.6	3 217.8	9 022.1	852.8	2 569.2
2008-09	19 010.1	913.0	4 726.5	1 462.0	5 762.1	3 161.0	11 394.3	1 125.3	2 270.9
2009-10	13 262.1	1 053.6	4 764.7	878.1	8 197.5	2 330.3	10 099.5	623.1	2 656.4
2009									
June	4 351.2	161.9	898.8	^ 174.9	1 901.5	656.1	2 962.6	^ 267.7	^ 457.8
September	3 393.7	^ 215.0	841.7	193.1	2 044.9	727.9	2 816.5	^ 202.1	^ 567.2
December	2 720.6	**283.8	804.0	^ 88.7	4 305.4	^ 445.0	2 147.2	142.0	^ 812.5
2010									
March	3 278.5	^ 131.7	1 029.9	413.4	^ 913.9	^ 571.9	2 398.2	159.3	^ 538.1
June	3 869.4	423.1	2 089.1	182.9	^ 933.3	585.5	2 737.6	119.8	^ 738.6
September	3 982.1	170.6	1 276.7	1 181.0	978.6	875.0	2 832.5	^ 147.5	^ 839.3
VALUE OF WORK DONE DURING PERIOD									
2007-08	12 574.9	1 203.4	3 030.7	1 522.7	4 693.2	2 654.7	8 660.5	663.6	1 781.4
2008-09	16 270.1	1 240.0	3 389.8	1 939.6	4 567.2	2 916.4	11 459.6	893.3	2 134.4
2009-10	14 305.7	1 261.4	4 663.2	1 712.5	5 864.3	2 845.3	11 033.6	957.4	2 605.7
2009									
June	4 073.2	289.3	987.5	447.9	1 422.8	^ 730.1	2 942.4	353.3	^ 533.3
September	3 664.7	279.9	1 167.0	483.1	1 227.0	608.4	2 882.7	333.8	^ 526.8
December	3 480.4	^ 320.0	1 111.9	514.9	1 484.5	671.7	2 815.5	234.6	^ 644.8
2010									
March	3 364.7	324.4	1 036.8	385.5	1 331.2	677.1	2 629.8	227.5	^ 655.8
June	3 795.8	337.1	1 347.4	328.9	1 821.6	888.1	2 705.6	161.6	778.3
September	3 603.8	282.4	1 202.5	369.5	1 582.6	744.5	2 363.1	185.3	624.0
VALUE OF WORK YET TO BE DONE DURING PERIOD									
2007-08	7 675.4	1 182.3	2 257.4	2 201.8	2 796.3	1 232.7	4 473.1	435.2	356.6
2008-09	9 301.1	866.0	3 134.3	1 632.9	3 227.8	1 418.3	4 026.4	776.2	238.6
2009-10	9 020.0	627.1	3 686.5	1 214.3	5 938.2	1 439.1	3 372.7	327.0	462.2
2009									
June	9 301.1	866.0	3 134.3	1 632.9	3 227.8	1 418.3	4 026.4	776.2	238.6
September	9 740.7	769.1	3 272.9	1 403.5	4 472.6	1 857.8	4 345.4	653.7	373.6
December	9 149.5	*875.4	2 801.4	1 103.4	7 143.8	1 802.7	3 686.9	542.1	^ 604.9
2010									
March	9 148.2	^ 719.0	2 879.6	1 155.3	6 743.6	1 675.7	3 287.1	461.0	413.2
June	9 020.0	627.1	3 686.5	1 214.3	5 938.2	1 439.1	3 372.7	327.0	^ 462.2
September	10 145.0	556.3	3 332.5	2 152.8	5 349.1	^ 2 317.2	4 844.1	329.3	^ 561.5

^ estimate has a relative standard error of 10% to less than 25% and should be used with caution

* estimate has a relative standard error of 25% to 50% and should be used with caution

** estimate has a relative standard error greater than 50% and is considered too unreliable for general use

<i>Period</i>	<i>Telecom- munications</i>	<i>Oil, gas, coal and other minerals</i>	<i>Other heavy industry</i>	<i>Other</i>	<i>Total</i>
\$m	\$m	\$m	\$m	\$m	\$m
VALUE OF WORK COMMENCED DURING PERIOD					
2007-08	4 349.1	31 613.6	1 304.8	905.1	80 271.9
2008-09	4 019.9	16 349.0	1 574.3	2 703.2	74 471.5
2009-10	4 101.8	58 761.5	655.3	1 277.2	108 661.2
2009					
June	1 292.8	4 813.3	467.1	^ 429.8	18 835.4
September	898.2	4 053.6	101.6	^ 477.1	16 532.5
December	1 256.1	45 119.3	262.0	^ 338.0	58 724.6
2010					
March	933.8	6 153.9	182.0	^ 226.6	16 931.3
June	1 013.7	3 434.6	109.7	^ 235.4	16 472.8
September	928.3	4 542.1	74.4	^ 171.2	17 999.4
VALUE OF WORK DONE DURING PERIOD					
2007-08	4 436.0	18 389.8	938.8	549.9	61 099.8
2008-09	3 989.3	24 567.0	1 156.8	1 510.3	76 033.9
2009-10	3 836.8	25 620.0	505.3	1 520.0	76 731.2
2009					
June	1 256.2	6 795.6	404.7	403.9	20 640.3
September	903.3	6 162.5	124.0	676.6	19 039.9
December	926.1	6 639.5	117.3	330.0	19 291.2
2010					
March	926.5	5 514.5	^ 95.8	^ 278.2	17 447.7
June	1 080.9	7 303.5	168.2	^ 235.3	20 952.4
September	941.7	6 973.8	124.1	^ 231.7	19 229.0
VALUE OF WORK YET TO BE DONE DURING PERIOD					
2007-08	214.8	28 403.3	658.0	203.3	52 090.4
2008-09	199.4	20 772.6	453.3	1 019.8	47 066.8
2009-10	363.6	54 420.8	404.6	783.1	82 059.4
2009					
June	199.4	20 772.6	453.3	1 019.8	47 066.8
September	146.5	19 055.4	347.6	776.1	47 214.7
December	472.6	57 973.7	522.2	822.8	87 501.6
2010					
March	459.5	58 202.4	390.7	705.0	86 240.4
June	363.6	54 420.8	404.6	783.1	82 059.4
September	^ 396.8	52 103.6	290.9	739.2	83 118.3

^ estimate has a relative standard error of 10% to less than 25% and should be used with caution

WORK COMMENCED BY THE PRIVATE SECTOR, By type: Original

	Roads, highways and subdivisions	Bridges	Railways	Harbours	Water storage and supply	Sewerage and drainage	Electricity generation, transmission and distribution	Pipelines
Period	\$m	\$m	\$m	\$m	\$m	\$m	\$m	\$m
BY THE PRIVATE SECTOR FOR THE PRIVATE SECTOR								
2007-08	5 415.5	199.5	1 458.2	340.0	989.7	996.9	3 884.4	835.3
2008-09	8 578.0	56.4	1 886.1	1 226.3	1 127.7	779.7	4 970.6	1 114.1
2009-10	3 650.5	46.5	613.2	567.0	4 520.6	519.8	3 493.5	607.8
2009								
June	^ 1 208.9	5.1	240.5	^ 133.8	^ 121.4	*170.3	1 493.6	^ 265.2
September	990.3	9.3	115.6	113.1	^ 149.3	^ 73.5	1 052.7	^ 194.8
December	793.8	**21.1	161.6	^ 33.8	3 602.4	*198.4	558.0	140.3
2010								
March	981.5	^ 8.5	255.5	295.9	*465.0	^ 143.4	726.2	154.6
June	^ 885.0	**7.6	80.5	124.2	*303.9	^ 104.4	1 156.7	118.0
September	^ 871.6	^ 5.2	651.4	1 138.8	^ 411.2	^ 123.7	1 376.3	^ 141.4
BY THE PRIVATE SECTOR FOR THE PUBLIC SECTOR								
2007-08	5 650.6	669.0	889.3	742.0	3 276.6	1 137.7	368.4	7.7
2008-09	6 582.1	608.1	1 790.2	204.4	3 519.1	1 459.5	833.2	3.1
2009-10	6 054.0	727.5	2 377.4	276.9	1 702.3	1 053.7	866.9	8.9
2009								
June	2 314.9	^ 106.5	477.7	34.6	1 609.4	380.0	374.7	*0.8
September	1 297.6	*136.6	426.8	^ 74.4	754.6	394.7	205.8	**5.5
December	1 141.9	**224.3	234.4	*49.9	316.9	^ 143.3	144.2	**1.6
2010								
March	1 536.4	^ 69.9	265.6	^ 108.1	^ 278.9	*265.8	^ 252.0	*1.2
June	2 078.1	296.6	1 450.5	*44.5	^ 351.8	^ 249.9	^ 264.9	**0.5
September	2 196.1	^ 102.7	230.9	*35.2	165.8	^ 303.3	^ 119.4	^ 5.3
TOTAL BY THE PRIVATE SECTOR								
2007-08	11 066.1	868.5	2 347.5	1 082.0	4 266.4	2 134.7	4 252.8	842.9
2008-09	15 160.1	664.5	3 676.3	1 430.7	4 646.8	2 239.2	5 803.8	1 117.2
2009-10	9 704.5	774.0	2 990.6	843.9	6 222.9	1 573.5	4 360.4	616.7
2009								
June	3 523.8	^ 111.6	718.2	^ 168.4	1 730.8	^ 550.3	1 868.3	^ 266.0
September	2 287.8	^ 145.9	542.4	187.5	903.9	468.3	1 258.5	^ 200.3
December	1 935.7	**245.4	396.0	^ 83.7	3 919.4	^ 341.6	702.2	141.9
2010								
March	2 517.9	^ 78.4	521.1	404.0	^ 743.9	*409.3	978.2	155.9
June	2 963.1	304.2	1 531.0	168.7	^ 655.7	^ 354.3	1 421.5	118.6
September	3 067.7	^ 107.9	882.3	1 174.0	577.1	^ 427.0	1 495.7	^ 146.7

^ estimate has a relative standard error of 10% to less than 25% and should be used with caution

* estimate has a relative standard error of 25% to 50% and should be used with caution

** estimate has a relative standard error greater than 50% and is considered too unreliable for general use

	Recreation	Telecom- munications	Oil, gas, coal and other minerals	Other heavy industry	Other	Total
Period	\$m	\$m	\$m	\$m	\$m	\$m

BY THE PRIVATE SECTOR FOR THE PRIVATE SECTOR

2007-08	1 876.4	4 321.6	31 439.9	1 293.3	820.0	53 870.8
2008-09	1 405.8	3 953.3	16 155.7	1 564.2	2 338.1	45 156.0
2009-10	1 700.2	3 643.6	58 687.6	645.7	1 031.7	79 727.7
2009						
June	^ 288.6	1 276.5	4 792.6	464.9	^ 313.4	10 774.9
September	^ 330.3	870.5	4 037.0	101.3	340.3	8 377.9
December	*594.2	906.4	45 095.0	258.4	^ 283.4	52 646.8
2010						
March	^ 301.0	872.8	6 140.7	179.4	^ 197.6	10 722.2
June	^ 474.6	994.0	3 414.9	106.6	^ 210.4	7 980.8
September	*589.5	902.8	4 526.0	74.2	^ 150.6	10 962.7

BY THE PRIVATE SECTOR FOR THE PUBLIC SECTOR

2007-08	240.0	21.1	22.3	4.8	82.2	13 111.8
2008-09	380.4	58.7	186.0	0.1	361.0	15 985.9
2009-10	315.9	449.4	73.9	—	237.6	14 144.3
2009						
June	*84.0	^ 15.7	20.7	—	115.1	5 534.1
September	^ 70.5	24.0	16.6	—	**134.0	3 541.3
December	*45.7	347.8	*24.3	—	*52.3	2 726.6
2010						
March	*99.4	59.3	13.3	*—	**28.2	2 978.1
June	^ 100.3	18.2	^ 19.8	—	*23.1	4 898.3
September	^ 66.2	24.7	**16.1	—	**13.7	3 279.4

TOTAL BY THE PRIVATE SECTOR

2007-08	2 116.4	4 342.8	31 462.2	1 298.1	902.3	66 982.5
2008-09	1 786.2	4 012.0	16 341.7	1 564.3	2 699.1	61 141.9
2009-10	2 016.1	4 093.0	58 761.5	645.7	1 269.3	93 872.0
2009						
June	^ 372.6	1 292.3	4 813.3	464.9	^ 428.5	16 308.9
September	^ 400.8	894.5	4 053.6	101.3	^ 474.4	11 919.2
December	*639.9	1 254.2	45 119.3	258.4	^ 335.7	55 373.4
2010						
March	^ 400.4	932.1	6 153.9	179.4	^ 225.7	13 700.3
June	^ 575.0	1 012.2	3 434.6	106.6	^ 233.5	12 879.1
September	^ 655.7	927.5	4 542.1	74.2	^ 164.3	14 242.2

^ estimate has a relative standard error of 10% to less than 25% and should be used with caution

* estimate has a relative standard error of 25% to 50% and should be used with caution

** estimate has a relative standard error greater than 50% and is considered too unreliable for general use

— nil or rounded to zero (including null cells)

	<i>Roads, highways and subdivisions</i>	<i>Bridges</i>	<i>Railways</i>	<i>Harbours</i>	<i>Water storage and supply</i>	<i>Sewerage and drainage</i>	<i>Electricity generation, transmission and distribution</i>	<i>Pipelines</i>
<i>Period</i>	\$m	\$m	\$m	\$m	\$m	\$m	\$m	\$m
BY THE PRIVATE SECTOR FOR THE PRIVATE SECTOR								
2007-08	5 095.8	93.7	1 567.9	1 030.7	749.5	894.7	3 727.4	624.0
2008-09	6 157.1	87.5	1 216.6	1 240.3	598.7	1 024.3	5 211.0	882.7
2009-10	4 861.7	46.3	1 336.1	999.7	1 735.0	516.8	4 269.7	942.7
2009								
June	1 413.5	14.6	327.7	285.0	^ 160.3	*238.0	1 300.2	350.6
September	1 355.2	*11.5	330.9	216.3	^ 219.0	^ 117.4	^ 1 126.4	326.6
December	1 098.6	*8.6	329.3	298.5	461.5	^ 119.3	1 170.7	233.0
2010								
March	1 229.9	**16.2	238.1	270.8	386.5	^ 134.0	958.9	223.6
June	1 178.0	**10.0	437.8	214.0	668.0	^ 146.0	1 013.7	159.6
September	1 150.8	**18.7	369.5	244.9	715.9	167.4	931.7	181.8
BY THE PRIVATE SECTOR FOR THE PUBLIC SECTOR								
2007-08	4 309.3	982.7	593.6	202.6	3 007.7	1 016.2	419.7	9.2
2008-09	6 162.0	956.4	1 242.6	294.0	3 063.9	1 099.8	645.9	3.3
2009-10	5 784.5	993.2	1 399.2	514.9	2 752.3	1 371.6	900.7	8.6
2009								
June	1 538.3	210.4	325.8	40.2	1 010.0	^ 232.9	147.5	*0.8
September	1 482.3	219.4	420.7	168.5	777.9	^ 295.8	^ 242.8	**5.6
December	1 474.2	^ 264.6	348.8	^ 175.9	742.5	332.3	192.7	**1.5
2010								
March	1 308.8	261.5	285.9	71.7	569.0	328.5	^ 216.7	*1.0
June	1 519.1	247.6	343.9	^ 98.8	662.8	415.0	248.6	**0.5
September	1 734.1	212.9	434.4	112.8	494.4	^ 367.6	154.7	*2.6
TOTAL BY THE PRIVATE SECTOR								
2007-08	9 405.1	1 076.4	2 161.5	1 233.4	3 757.2	1 910.9	4 147.0	633.2
2008-09	12 319.0	1 043.9	2 459.2	1 534.3	3 662.6	2 124.2	5 856.9	886.0
2009-10	10 646.2	1 039.5	2 735.4	1 514.5	4 487.3	1 888.4	5 170.4	951.3
2009								
June	2 951.8	224.9	653.5	325.2	1 170.3	^ 471.0	1 447.7	351.4
September	2 837.5	230.9	751.6	384.8	997.0	413.2	1 369.2	332.2
December	2 572.8	^ 273.2	678.1	474.3	1 204.0	451.6	1 363.4	234.5
2010								
March	2 538.7	277.7	523.9	342.6	955.5	462.5	1 175.5	224.6
June	2 697.1	257.6	781.8	312.8	1 330.8	561.1	1 262.3	160.1
September	2 884.9	231.5	803.9	357.7	1 210.2	535.0	1 086.3	184.4

^ estimate has a relative standard error of 10% to less than 25% and should be used with caution

* estimate has a relative standard error of 25% to 50% and should be used with caution

** estimate has a relative standard error greater than 50% and is considered too unreliable for general use

	Recreation	Telecom- munications	Oil, gas, coal and other minerals	Other heavy industry	Other	Total
Period	\$m	\$m	\$m	\$m	\$m	\$m

BY THE PRIVATE SECTOR FOR THE PRIVATE SECTOR

2007-08	1 127.2	4 405.0	18 227.5	925.7	487.4	38 956.6
2008-09	1 228.4	3 933.9	24 329.2	1 153.6	1 253.0	48 316.2
2009-10	1 517.4	3 656.1	25 453.8	496.3	1 280.3	47 111.9
2009						
June	^ 255.3	1 237.1	6 729.1	403.8	300.8	13 016.1
September	^ 340.7	878.3	6 115.0	123.9	548.7	11 710.1
December	^ 396.7	896.5	6 583.5	114.9	280.4	11 991.4
2010						
March	^ 352.8	880.1	5 475.9	^ 94.5	^ 242.5	10 503.8
June	^ 427.1	1 001.3	7 279.4	163.0	208.7	12 906.7
September	^ 411.3	860.5	6 957.9	122.1	213.5	12 345.9

BY THE PRIVATE SECTOR FOR THE PUBLIC SECTOR

2007-08	203.4	24.1	10.9	7.2	59.5	10 846.1
2008-09	366.1	48.4	230.6	0.1	247.7	14 360.8
2009-10	406.1	170.9	166.2	—	231.3	14 699.7
2009						
June	*84.5	17.2	66.5	—	99.2	3 773.2
September	^ 63.4	22.2	47.5	—	*124.7	3 870.8
December	**98.8	27.4	^ 56.0	—	*47.2	3 762.1
2010						
March	*143.3	43.4	38.5	*—	*34.8	3 303.1
June	^ 100.6	77.9	^ 24.2	^ —	*24.6	3 763.7
September	^ 69.0	^ 80.3	*15.9	—	**16.0	3 694.6

TOTAL BY THE PRIVATE SECTOR

2007-08	1 330.6	4 429.1	18 238.4	932.9	546.9	49 802.7
2008-09	1 594.5	3 982.2	24 559.8	1 153.7	1 500.7	62 676.9
2009-10	1 923.5	3 827.1	25 620.0	496.4	1 511.7	61 811.6
2009						
June	^ 339.8	1 254.4	6 795.6	403.8	400.0	16 789.3
September	^ 404.2	900.5	6 162.5	123.9	673.5	15 580.9
December	^ 495.5	923.9	6 639.5	114.9	327.6	15 753.4
2010						
March	^ 496.1	923.4	5 514.5	^ 94.5	^ 277.3	13 806.9
June	^ 527.7	1 079.2	7 303.5	163.0	^ 233.3	16 670.4
September	^ 480.2	940.8	6 973.8	122.1	^ 229.5	16 040.5

^ estimate has a relative standard error of 10% to less than 25% and should be used with caution

* estimate has a relative standard error of 25% to 50% and should be used with caution

** estimate has a relative standard error greater than 50% and is considered too unreliable for general use

— nil or rounded to zero (including null cells)

	Roads, highways and subdivisions	Bridges	Railways	Harbours	Water storage and supply	Sewerage and drainage	Electricity generation, transmission and distribution
Period	\$m	\$m	\$m	\$m	\$m	\$m	\$m
BY THE PRIVATE SECTOR FOR THE PRIVATE SECTOR							
2007-08	2 472.6	6.8	1 312.4	704.6	221.3	223.3	3 585.7
2008-09	3 702.0	8.8	1 730.7	689.3	599.0	105.5	2 907.6
2009-10	2 367.1	10.4	1 154.8	672.4	3 464.6	203.1	2 497.7
2009							
June	3 702.0	8.8	1 730.7	689.3	599.0	105.5	2 907.6
September	3 254.7	^ 9.2	1 671.0	649.1	691.3	87.5	3 127.5
December	2 914.2	**14.9	1 484.2	503.8	3 870.7	*217.3	2 625.3
2010							
March	2 796.3	**12.4	1 497.4	562.7	3 912.7	*242.5	2 261.7
June	2 367.1	**10.4	1 154.8	672.4	3 464.6	*203.1	2 497.7
September	2 028.5	**14.1	1 371.5	1 637.3	3 265.4	^ 155.1	3 708.5
BY THE PRIVATE SECTOR FOR THE PUBLIC SECTOR							
2007-08	4 593.1	1 129.3	677.8	549.9	2 121.2	783.5	119.3
2008-09	5 015.5	767.9	1 285.8	411.3	2 326.1	1 022.2	344.5
2009-10	6 044.1	513.0	2 517.1	216.5	1 750.6	885.6	304.0
2009							
June	5 015.5	767.9	1 285.8	411.3	2 326.1	1 022.2	344.5
September	5 452.9	688.1	1 582.2	333.8	2 502.5	1 365.6	^ 408.5
December	5 362.5	*806.1	1 297.1	216.6	2 155.0	1 103.3	313.2
2010							
March	5 539.4	^ 640.9	1 363.3	267.6	1 888.0	975.7	312.0
June	6 044.1	513.0	2 517.1	216.5	1 750.6	885.6	304.0
September	7 298.2	426.0	1 955.3	206.7	1 363.1	^ 1 543.2	323.8
TOTAL BY THE PRIVATE SECTOR							
2007-08	7 065.6	1 136.1	1 990.3	1 254.4	2 342.6	1 006.8	3 705.1
2008-09	8 717.4	776.6	3 016.5	1 100.6	2 925.1	1 127.7	3 252.1
2009-10	8 411.1	523.4	3 671.9	888.9	5 215.2	1 088.6	2 801.7
2009							
June	8 717.4	776.6	3 016.5	1 100.6	2 925.1	1 127.7	3 252.1
September	8 707.6	697.3	3 253.2	983.0	3 193.8	1 453.1	3 536.0
December	8 276.7	*821.1	2 781.4	720.4	6 025.7	1 320.6	2 938.5
2010							
March	8 335.8	^ 653.3	2 860.6	830.3	5 800.7	1 218.2	2 573.7
June	8 411.1	523.4	3 671.9	888.9	5 215.2	1 088.6	2 801.7
September	9 326.7	440.1	3 326.8	1 844.0	4 628.5	^ 1 698.3	4 032.3

^ estimate has a relative standard error of 10% to less than 25% and should be used with caution

* estimate has a relative standard error of 25% to 50% and should be used with caution

** estimate has a relative standard error greater than 50% and is considered too unreliable for general use

	Pipelines	Recreation	Telecom- munications	Oil, gas, coal and other minerals	Other heavy industry	Other	Total
Period	\$m	\$m	\$m	\$m	\$m	\$m	\$m
BY THE PRIVATE SECTOR FOR THE PRIVATE SECTOR							
2007-08	434.0	77.0	182.4	28 402.3	657.9	190.8	38 471.1
2008-09	775.7	75.3	159.3	20 671.1	451.4	980.4	32 855.9
2009-10	326.1	216.2	61.7	54 412.2	400.6	745.1	66 531.9
2009							
June	775.7	*75.3	159.3	20 671.1	451.4	980.4	32 855.9
September	653.0	^ 103.8	103.2	18 984.4	347.3	745.5	30 427.4
December	541.8	**246.1	109.3	57 934.6	517.6	778.2	71 758.1
2010							
March	459.8	^ 107.2	82.1	58 189.1	384.6	677.5	71 186.1
June	326.1	*216.2	61.7	54 412.2	400.6	745.1	66 531.9
September	325.3	*234.0	^ 105.6	52 102.5	288.8	714.2	65 950.8
BY THE PRIVATE SECTOR FOR THE PUBLIC SECTOR							
2007-08	0.4	9.8	27.8	1.0	—	11.8	10 025.0
2008-09	0.1	4.2	38.9	101.5	—	38.3	11 356.4
2009-10	0.5	43.4	301.7	8.6	—	37.9	12 623.0
2009							
June	**0.1	*4.2	38.9	101.5	—	38.3	11 356.4
September	*0.2	^ 28.7	42.0	71.0	—	*30.1	12 505.7
December	**0.3	**77.1	362.3	39.2	—	*44.5	11 777.0
2010							
March	**0.5	*56.0	376.9	13.3	—	^ 27.4	11 461.0
June	**0.5	^ 43.4	301.7	8.6	—	^ 37.9	12 623.0
September	^ 3.8	^ 45.4	^ 291.1	1.1	—	^ 20.3	13 478.0
TOTAL BY THE PRIVATE SECTOR							
2007-08	434.3	86.8	210.3	28 403.3	657.9	202.6	48 496.1
2008-09	775.9	79.4	198.2	20 772.6	451.4	1 018.8	44 212.3
2009-10	326.6	259.6	363.4	54 420.8	400.6	783.0	79 154.9
2009							
June	775.9	*79.4	198.2	20 772.6	451.4	1 018.8	44 212.3
September	653.2	^ 132.5	145.2	19 055.4	347.3	775.6	42 933.1
December	542.1	*323.1	471.6	57 973.7	517.6	822.7	83 535.1
2010							
March	460.3	^ 163.2	459.0	58 202.4	384.6	704.9	82 647.1
June	326.6	*259.6	363.4	54 420.8	400.6	783.0	79 154.9
September	329.1	*279.4	^ 396.7	52 103.6	288.8	734.5	79 428.8

^ estimate has a relative standard error of 10% to less than 25% and should be used with caution

* estimate has a relative standard error of 25% to 50% and should be used with caution

** estimate has a relative standard error greater than 50% and is considered too unreliable for general use

— nil or rounded to zero (including null cells)

	<i>Roads, highways and subdivisions</i>	<i>Bridges</i>	<i>Railways</i>	<i>Harbours</i>	<i>Water storage and supply</i>	<i>Sewerage and drainage</i>	<i>Electricity generation, transmission and distribution</i>	<i>Pipelines</i>
<i>Period</i>	\$m	\$m	\$m	\$m	\$m	\$m	\$m	\$m
VALUE OF WORK COMMENCED DURING PERIOD								
2007-08	3 311.0	123.4	675.0	1 216.3	1 481.2	1 083.1	4 769.3	9.9
2008-09	3 850.0	248.5	1 050.2	31.2	1 115.3	921.8	5 590.5	8.2
2009-10	3 557.6	279.6	1 774.1	34.2	1 974.6	756.8	5 739.1	6.5
2009								
June	827.4	^ 50.3	180.6	6.5	^ 170.7	^ 105.7	1 094.3	1.7
September	1 105.8	^ 69.1	299.3	^ 5.6	1 141.0	^ 259.6	1 558.0	1.7
December	784.9	38.4	408.0	5.0	386.1	^ 103.4	1 445.0	—
2010								
March	760.5	^ 53.3	508.8	**9.4	170.0	^ 162.6	1 420.0	3.4
June	906.4	118.8	558.1	*14.2	277.5	231.2	1 316.1	1.3
September	914.4	62.7	394.5	7.0	^ 401.6	^ 448.0	1 336.8	^ 0.7
VALUE OF WORK DONE DURING PERIOD								
2007-08	3 169.9	126.9	869.2	289.3	936.0	743.8	4 513.4	30.3
2008-09	3 951.1	196.1	930.6	405.3	904.6	792.2	5 602.7	7.3
2009-10	3 659.5	221.9	1 927.8	197.9	1 377.0	956.9	5 863.2	6.1
2009								
June	1 121.4	^ 64.3	334.0	122.8	252.6	259.1	1 494.7	1.9
September	827.2	^ 49.0	415.4	98.4	230.0	^ 195.2	1 513.5	1.6
December	907.6	^ 46.7	433.8	40.6	280.6	220.1	1 452.1	—
2010								
March	826.0	^ 46.7	512.8	^ 43.0	375.7	214.6	1 454.3	2.9
June	1 098.7	79.5	565.7	*16.1	490.8	327.0	1 443.3	1.6
September	718.9	50.8	398.6	11.8	372.4	209.5	1 276.7	^ 0.9
VALUE OF WORK YET TO BE DONE								
2007-08	609.8	46.3	267.2	947.4	453.8	225.9	768.1	0.8
2008-09	583.7	89.4	117.8	532.3	302.7	290.7	774.3	0.4
2009-10	608.9	103.8	14.6	325.4	723.0	350.5	571.0	0.4
2009								
June	583.7	*89.4	117.8	532.3	^ 302.7	^ 290.7	774.3	0.4
September	1 033.2	71.8	19.6	420.5	1 278.8	^ 404.7	809.4	0.5
December	872.8	54.4	20.0	383.1	1 118.1	^ 482.1	748.4	—
2010								
March	812.4	65.7	19.0	325.0	942.9	^ 457.5	713.3	0.7
June	608.9	103.8	14.6	325.4	723.0	^ 350.5	571.0	0.4
September	818.3	116.2	5.7	308.8	^ 720.6	^ 618.8	811.9	0.2

^ estimate has a relative standard error of 10% to less than 25% and should be used with caution

* estimate has a relative standard error of 25% to 50% and should be used with caution

** estimate has a relative standard error greater than 50% and is considered too unreliable for general use

— nil or rounded to zero (including null cells)

<i>Period</i>	<i>Recreation</i>	<i>Telecom- munications</i>	<i>Oil, gas, coal and other minerals</i>	<i>Other heavy industry</i>	<i>Other</i>	<i>Total</i>
\$m	\$m	\$m	\$m	\$m	\$m	\$m
VALUE OF WORK COMMENCED DURING PERIOD						
2007-08	452.8	6.4	151.4	6.7	2.8	13 289.4
2008-09	484.7	7.9	7.3	10.0	4.1	13 329.6
2009-10	640.3	8.8	—	9.6	7.9	14 789.2
2009						
June	85.2	^ 0.6	—	2.2	*1.3	2 526.5
September	166.4	^ 3.7	—	0.4	2.8	4 613.3
December	^ 172.6	1.9	—	3.6	2.3	3 351.2
2010						
March	137.7	1.7	—	2.6	0.9	3 231.0
June	163.6	1.5	—	3.0	1.9	3 593.7
September	183.6	0.8	—	0.2	6.9	3 757.2
VALUE OF WORK DONE DURING PERIOD						
2007-08	450.9	6.9	151.4	5.9	3.1	11 297.1
2008-09	540.0	7.1	7.3	3.2	9.7	13 357.0
2009-10	682.2	9.8	—	8.9	8.4	14 919.6
2009						
June	193.5	1.9	—	0.9	^ 3.9	3 851.0
September	122.7	^ 2.8	—	0.1	3.1	3 459.0
December	149.3	2.2	—	2.4	2.4	3 537.8
2010						
March	159.7	3.0	—	1.2	0.9	3 640.8
June	250.5	1.7	—	5.2	1.9	4 282.0
September	143.8	0.9	—	2.0	2.2	3 188.6
VALUE OF WORK YET TO BE DONE						
2007-08	269.7	4.6	—	0.1	0.7	3 594.3
2008-09	159.2	1.1	—	1.9	1.1	2 854.5
2009-10	202.6	0.3	—	4.0	0.1	2 904.5
2009						
June	159.2	1.1	—	1.9	^ 1.1	2 854.5
September	241.1	1.3	—	0.3	0.5	4 281.6
December	281.8	1.0	—	4.7	*0.1	3 966.5
2010						
March	250.0	0.5	—	6.1	*0.1	3 593.3
June	202.6	0.3	—	4.0	*0.1	2 904.5
September	282.1	—	—	2.1	4.7	3 689.5

^ estimate has a relative standard error of 10% to less than 25% and should be used with caution

* estimate has a relative standard error of 25% to 50% and should be used with caution

— nil or rounded to zero (including null cells)

	<i>Roads, highways and subdivisions</i>	<i>Bridges</i>	<i>Railways</i>	<i>Harbours</i>	<i>Water storage and supply</i>	<i>Sewerage and drainage</i>	<i>Electricity generation, transmission and distribution</i>	<i>Pipelines</i>
<i>Period</i>	\$m	\$m	\$m	\$m	\$m	\$m	\$m	\$m
VALUE OF WORK COMMENCED DURING PERIOD								
2007-08	8 961.6	792.4	1 564.3	1 958.3	4 757.9	2 220.9	5 137.7	17.5
2008-09	10 432.1	856.6	2 840.4	235.6	4 634.4	2 381.2	6 423.7	11.3
2009-10	9 611.6	1 007.1	4 151.6	311.1	3 676.9	1 810.5	6 606.0	15.3
2009								
June	3 142.3	156.8	658.3	41.1	1 780.0	485.8	1 469.0	^ 2.6
September	2 403.4	^ 205.7	726.2	^ 80.0	1 895.6	654.3	1 763.8	** 7.3
December	1 926.8	** 262.7	642.4	* 54.9	703.0	^ 246.7	1 589.3	** 1.6
2010								
March	2 296.9	^ 123.2	774.4	^ 117.5	448.9	^ 428.4	1 672.0	^ 4.6
June	2 984.5	415.5	2 008.6	^ 58.7	629.4	481.1	1 581.0	^ 1.8
September	3 110.5	165.4	625.4	* 42.2	^ 567.4	^ 751.4	1 456.1	^ 6.0
VALUE OF WORK DONE DURING PERIOD								
2007-08	7 479.1	1 109.6	1 462.9	492.0	3 943.7	1 760.0	4 933.1	39.6
2008-09	10 113.1	1 152.5	2 173.2	699.3	3 968.5	1 892.0	6 248.5	10.6
2009-10	9 443.9	1 215.1	3 327.0	712.8	4 129.3	2 328.5	6 764.0	14.7
2009								
June	2 659.7	274.7	659.7	163.0	1 262.6	492.0	1 642.2	2.7
September	2 309.5	268.4	836.1	266.8	1 008.0	491.0	1 756.3	** 7.2
December	2 381.8	^ 311.3	782.6	216.4	1 023.1	552.4	1 644.8	** 1.6
2010								
March	2 134.8	308.3	798.7	114.7	944.6	543.0	1 670.9	^ 3.9
June	2 617.8	327.1	909.6	^ 114.8	1 153.6	742.1	1 691.9	^ 2.0
September	2 453.0	263.7	833.0	124.6	866.8	577.2	1 431.4	* 3.5
VALUE OF WORK YET TO BE DONE								
2007-08	5 202.8	1 175.6	945.0	1 497.3	2 575.0	1 009.4	887.4	1.2
2008-09	5 599.1	857.3	1 403.6	943.6	2 628.9	1 312.9	1 118.8	0.5
2009-10	6 653.0	616.8	2 531.7	542.0	2 473.6	1 236.1	875.0	0.9
2009								
June	5 599.1	857.3	1 403.6	943.6	2 628.9	1 312.9	1 118.8	^ 0.5
September	6 486.0	759.9	1 601.9	754.3	3 781.3	1 770.3	1 217.8	^ 0.7
December	6 235.2	* 860.5	1 317.1	599.6	3 273.1	1 585.4	1 061.6	** 0.3
2010								
March	6 351.8	^ 706.6	1 382.2	592.6	2 830.9	1 433.2	1 025.4	^ 1.2
June	6 653.0	616.8	2 531.7	542.0	2 473.6	1 236.1	875.0	* 0.9
September	8 116.5	542.2	1 961.0	515.5	2 083.7	^ 2 162.1	1 135.7	^ 4.0

^ estimate has a relative standard error of 10% to less than 25% and should be used with caution

* estimate has a relative standard error of 25% to 50% and should be used with caution

** estimate has a relative standard error greater than 50% and is considered too unreliable for general use

<i>Period</i>	<i>Recreation</i>	<i>Telecom- munications</i>	<i>Oil, gas, coal and other minerals</i>	<i>Other heavy industry</i>	<i>Other</i>	<i>Total</i>
\$m	\$m	\$m	\$m	\$m	\$m	\$m
.....						
VALUE OF WORK COMMENCED DURING PERIOD						
2007-08	692.8	27.5	173.7	11.5	85.1	26 401.1
2008-09	865.1	66.6	193.3	10.1	365.1	29 315.5
2009-10	956.2	458.2	73.9	9.6	245.5	28 933.5
2009						
June	^ 169.2	^ 16.3	20.7	2.2	116.4	8 060.6
September	236.9	27.7	16.6	0.4	**136.8	8 154.6
December	^ 218.2	349.7	*24.3	3.6	*54.6	6 077.8
2010						
March	^ 237.1	61.1	13.3	2.6	*29.1	6 209.1
June	264.0	19.7	^ 19.8	3.0	*25.0	8 492.0
September	249.8	25.5	**16.1	0.2	*20.5	7 036.7
.....						
VALUE OF WORK DONE DURING PERIOD						
2007-08	654.3	31.0	162.3	13.1	62.5	22 143.2
2008-09	906.0	55.4	237.9	3.3	257.4	27 717.8
2009-10	1 088.3	180.7	166.2	8.9	239.7	29 619.3
2009						
June	^ 278.0	19.1	66.5	0.9	103.1	7 624.2
September	186.1	25.0	47.5	0.1	*127.9	7 329.8
December	^ 248.1	29.7	^ 56.0	2.4	*49.6	7 299.9
2010						
March	^ 303.0	46.4	38.6	1.2	*35.7	6 943.9
June	351.1	79.7	^ 24.2	5.2	*26.5	8 045.7
September	212.7	^ 81.1	*15.9	2.0	*18.2	6 883.1
.....						
VALUE OF WORK YET TO BE DONE						
2007-08	279.6	32.4	1.0	0.1	12.5	13 619.3
2008-09	163.3	40.1	101.5	1.9	39.4	14 210.9
2009-10	246.1	301.9	8.6	4.0	38.0	15 527.6
2009						
June	163.3	40.1	101.5	1.9	39.4	14 210.9
September	269.7	43.3	71.0	0.3	*30.6	16 787.3
December	^ 358.9	363.3	39.2	4.7	*44.5	15 743.5
2010						
March	306.0	377.4	13.3	6.1	^ 27.6	15 054.2
June	246.1	301.9	8.6	4.0	^ 38.0	15 527.6
September	327.5	^ 291.2	1.1	2.1	^ 25.0	17 167.5

^ estimate has a relative standard error of 10% to less than 25% and should be used with caution

* estimate has a relative standard error of 25% to 50% and should be used with caution

** estimate has a relative standard error greater than 50% and is considered too unreliable for general use

<i>Period</i>	<i>Roads, highways and subdivisions</i>	<i>Bridges, railways and harbours</i>	<i>Electricity generation, transmission etc. and pipelines</i>	<i>Water storage and supply, sewerage and drainage</i>	<i>Telecom- munications</i>	<i>Heavy industry</i>	<i>Recreation and other</i>	<i>Total</i>
<i>\$m</i>	<i>\$m</i>	<i>\$m</i>	<i>\$m</i>	<i>\$m</i>	<i>\$m</i>	<i>\$m</i>	<i>\$m</i>	<i>\$m</i>
VALUE OF WORK COMMENCED DURING PERIOD								
2007–08	4 198.8	2 034.3	3 134.3	3 343.3	1 465.6	1 864.2	694.1	16 734.7
2008–09	3 192.0	2 005.1	3 592.1	1 335.6	1 295.7	3 101.2	1 118.6	15 640.2
2009–10	3 975.6	2 491.0	3 188.0	1 390.8	1 368.5	2 708.5	1 093.0	16 215.4
2009								
June	777.6	432.4	953.5	^ 283.1	411.9	1 861.7	* 251.4	4 971.8
September	1 176.1	596.8	825.2	^ 422.9	334.7	464.7	^ 220.3	4 040.6
December	946.3	410.3	767.0	353.5	374.2	444.9	* 331.1	3 627.5
2010								
March	599.9	472.0	831.3	309.0	309.6	1 194.5	^ 223.8	3 940.1
June	1 253.3	1 011.8	764.5	^ 305.4	350.0	604.5	* 317.8	4 607.2
September	1 782.0	478.7	762.9	^ 380.7	266.1	442.3	* 381.6	4 494.3
VALUE OF WORK DONE DURING PERIOD								
2007–08	3 060.4	1 281.8	2 550.2	1 885.3	1 529.3	1 385.5	649.1	12 341.7
2008–09	4 019.1	1 678.2	3 821.8	2 149.9	1 314.9	2 450.3	881.4	16 315.8
2009–10	3 323.0	2 604.5	3 420.5	1 898.2	1 327.8	2 574.4	988.4	16 136.9
2009								
June	1 037.7	434.4	988.6	^ 554.7	411.1	884.3	^ 227.3	4 538.1
September	900.4	623.8	913.8	532.4	326.6	495.5	^ 213.6	4 006.1
December	805.8	645.6	828.6	446.0	317.8	672.0	^ 238.5	3 954.4
2010								
March	726.2	601.8	847.1	444.2	325.9	612.2	^ 262.6	3 820.0
June	890.6	733.3	831.0	475.6	357.4	794.7	^ 273.7	4 356.3
September	831.2	639.1	855.0	340.7	255.4	667.6	^ 205.0	3 794.0
VALUE OF WORK YET TO BE DONE								
2007–08	1 922.2	1 212.3	1 354.2	1 707.9	95.3	969.5	190.3	7 451.6
2008–09	1 031.8	1 495.7	830.2	916.5	64.9	1 862.2	103.5	6 304.7
2009–10	2 016.8	1 578.0	704.8	622.1	56.4	2 036.0	238.7	7 252.8
2009								
June	1 031.8	1 495.7	830.2	916.5	64.9	1 862.2	^ 103.5	6 304.7
September	1 475.3	1 650.8	869.8	^ 1 047.9	36.9	1 837.2	115.2	7 033.1
December	1 578.1	1 331.5	774.0	^ 919.3	96.9	1 576.9	** 246.3	6 522.9
2010								
March	1 541.7	1 291.6	823.3	^ 861.5	87.7	2 226.8	^ 122.0	6 954.7
June	2 016.8	1 578.0	704.8	^ 622.1	56.4	2 036.0	* 238.7	7 252.8
September	2 876.6	1 012.7	984.2	^ 702.8	^ 74.3	1 784.7	* 244.7	7 680.0

^ estimate has a relative standard error of 10% to less than 25% and should be used with caution

* estimate has a relative standard error of 25% to 50% and should be used with caution

** estimate has a relative standard error greater than 50% and is considered too unreliable for general use

	<i>Roads, highways and subdivisions</i>	<i>Bridges, railways and harbours</i>	<i>Electricity generation, transmission etc. and pipelines</i>	<i>Water storage and supply, sewerage and drainage</i>	<i>Telecom- munications</i>	<i>Heavy industry</i>	<i>Recreation and other</i>	Total
<i>Period</i>	\$m	\$m	\$m	\$m	\$m	\$m	\$m	\$m
VALUE OF WORK COMMENCED DURING PERIOD								
2007-08	1 953.9	1 183.2	1 290.9	988.4	1 006.7	720.1	978.5	8 121.8
2008-09	1 726.8	698.2	1 354.6	1 722.6	1 278.5	1 100.5	741.9	8 623.1
2009-10	2 918.6	840.2	1 497.4	4 427.8	1 215.9	1 240.4	621.0	12 761.5
2009								
June	^ 385.8	226.8	310.9	^ 228.6	458.6	^ 371.4	*247.6	2 229.7
September	533.4	60.1	551.7	236.4	280.5	373.8	*207.1	2 242.9
December	^ 384.1	89.9	278.4	3 642.3	330.2	377.8	^ 146.1	5 248.9
2010								
March	1 021.2	158.2	290.4	*336.4	289.0	292.3	^ 144.3	2 531.8
June	979.8	532.1	376.9	*212.7	316.2	196.6	^ 123.5	2 737.9
September	^ 802.7	216.4	1 023.7	^ 225.7	241.1	^ 194.8	^ 152.3	2 856.7
VALUE OF WORK DONE DURING PERIOD								
2007-08	2 498.6	491.7	1 148.7	811.3	1 017.4	897.9	458.6	7 324.2
2008-09	2 013.6	691.9	1 600.5	1 266.7	1 215.9	982.1	575.3	8 346.0
2009-10	1 889.9	720.1	1 704.1	2 215.1	1 215.8	1 203.6	592.3	9 540.9
2009								
June	^ 504.0	196.8	396.0	^ 370.6	424.0	323.7	^ 199.3	2 414.4
September	461.3	216.9	480.8	321.1	286.3	324.9	*202.2	2 293.3
December	385.1	160.7	459.6	616.0	307.4	412.0	^ 108.5	2 449.3
2010								
March	484.3	153.1	337.6	465.6	294.4	259.2	^ 131.7	2 125.8
June	559.3	189.4	426.1	812.5	327.7	207.5	^ 149.9	2 672.5
September	^ 569.8	267.7	488.6	706.0	241.0	^ 199.1	^ 122.1	2 594.3
VALUE OF WORK YET TO BE DONE								
2007-08	866.4	685.7	1 335.3	378.2	15.7	166.3	61.3	3 508.8
2008-09	337.3	624.0	837.0	794.8	75.5	66.8	70.9	2 806.3
2009-10	1 602.9	694.2	691.5	3 249.6	60.2	69.5	72.7	6 440.7
2009								
June	337.3	624.0	837.0	794.8	75.5	^ 66.8	70.9	2 806.3
September	566.0	480.5	985.8	893.5	74.3	145.7	^ 45.0	3 190.8
December	636.1	361.4	870.0	4 014.2	93.7	71.7	^ 100.8	6 147.9
2010								
March	1 189.3	346.6	684.3	3 823.1	80.3	^ 98.9	129.8	6 352.3
June	1 602.9	694.2	691.5	3 249.6	60.2	^ 69.5	^ 72.7	6 440.7
September	2 318.2	680.5	1 733.9	3 306.1	^ 92.6	155.4	104.0	8 390.8

^ estimate has a relative standard error of 10% to less than 25% and should be used with caution

* estimate has a relative standard error of 25% to 50% and should be used with caution

<i>Period</i>	<i>Roads, highways and subdivisions</i>	<i>Bridges, railways and harbours</i>	<i>Electricity generation, transmission etc. and pipelines</i>	<i>Water storage and supply, sewerage and drainage</i>	<i>Telecom- munications</i>	<i>Heavy industry</i>	<i>Recreation and other</i>	<i>Total</i>
<i>\$m</i>	<i>\$m</i>	<i>\$m</i>	<i>\$m</i>	<i>\$m</i>	<i>\$m</i>	<i>\$m</i>	<i>\$m</i>	<i>\$m</i>
VALUE OF WORK COMMENCED DURING PERIOD								
2007–08	5 082.3	1 177.8	2 572.2	3 660.7	832.7	6 473.4	838.3	20 637.4
2008–09	9 671.4	1 177.1	2 641.1	2 485.7	620.4	4 674.8	860.8	22 131.3
2009–10	3 185.7	1 782.0	2 347.7	2 025.5	662.4	6 932.5	689.2	17 625.1
2009								
June	2 344.0	^ 176.9	465.6	^ 430.5	176.2	1 192.9	^ 127.9	4 914.1
September	983.7	^ 189.3	636.0	630.0	128.7	1 565.9	^ 141.0	4 274.6
December	695.6	* 477.8	594.6	^ 355.3	243.1	1 843.2	192.9	4 402.4
2010								
March	786.4	252.9	559.6	^ 588.5	143.0	2 285.7	^ 169.1	4 785.1
June	^ 720.0	862.0	557.5	451.7	147.6	1 237.8	^ 186.3	4 162.9
September	642.3	232.8	526.5	^ 939.6	161.9	1 320.9	^ 228.6	4 052.5
VALUE OF WORK DONE								
2007–08	3 763.1	1 321.4	2 587.7	3 618.4	848.1	4 122.8	525.1	16 786.6
2008–09	6 087.5	1 643.2	3 206.0	2 547.5	648.7	6 117.6	818.5	21 068.9
2009–10	5 593.6	1 474.6	2 700.3	1 969.3	563.3	6 569.5	708.0	19 578.7
2009								
June	1 512.7	473.6	882.3	567.7	178.1	1 619.6	^ 187.4	5 421.3
September	1 618.6	401.1	857.9	462.4	130.3	1 601.5	168.5	5 240.4
December	1 417.3	^ 431.3	684.4	476.7	132.9	1 667.9	^ 168.3	4 978.9
2010								
March	1 267.6	320.5	547.3	443.8	128.3	1 580.9	^ 162.6	4 451.0
June	1 290.1	321.7	610.6	586.4	171.8	1 719.2	^ 208.7	4 908.4
September	1 370.4	282.4	513.7	626.5	175.6	1 969.5	^ 210.7	5 148.7
VALUE OF WORK YET TO BE DONE								
2007–08	4 186.7	1 605.1	1 329.4	1 702.5	48.9	5 086.0	89.3	14 047.8
2008–09	6 842.8	932.7	760.5	880.1	19.4	3 924.4	85.0	13 445.0
2009–10	4 637.1	1 414.3	582.0	1 328.9	109.5	4 379.9	188.7	12 640.4
2009								
June	6 842.8	932.7	760.5	880.1	19.4	3 924.4	^ 85.0	13 445.0
September	6 475.4	843.1	^ 736.1	1 202.6	16.3	4 054.0	149.2	13 476.7
December	5 794.2	^ 1 054.9	636.9	1 254.2	131.6	4 642.3	212.9	13 727.0
2010								
March	5 363.9	^ 1 003.4	634.9	^ 1 327.1	126.7	4 758.6	^ 156.6	13 371.3
June	4 637.1	1 414.3	582.0	^ 1 328.9	109.5	4 379.9	188.7	12 640.4
September	4 134.8	1 406.4	616.3	1 635.4	^ 97.3	3 634.9	245.8	11 770.9

^ estimate has a relative standard error of 10% to less than 25% and should be used with caution

* estimate has a relative standard error of 25% to 50% and should be used with caution

<i>Period</i>	<i>Roads, highways and subdivisions</i>	<i>Bridges, railways and harbours</i>	<i>Electricity generation, transmission etc. and pipelines</i>	<i>Water storage and supply, sewerage and drainage</i>	<i>Telecom- munications</i>	<i>Heavy industry</i>	<i>Recreation and other</i>	<i>Total</i>
	\$m	\$m	\$m	\$m	\$m	\$m	\$m	\$m
VALUE OF WORK COMMENCED DURING PERIOD								
2007-08	778.4	227.7	697.6	250.3	265.4	605.0	160.3	2 984.7
2008-09	1 214.4	275.8	1 050.8	1 897.4	233.8	553.7	172.0	5 397.7
2009-10	863.3	434.9	878.2	464.3	216.4	587.5	435.6	3 880.3
2009								
June	214.7	84.3	579.2	1 465.2	61.5	79.3	^ 19.7	2 503.8
September	^ 192.5	74.8	268.0	81.7	37.0	179.5	* 98.3	931.8
December	171.6	91.7	152.0	83.3	69.5	87.6	** 169.1	^ 824.8
2010								
March	^ 249.5	106.0	172.4	^ 110.6	51.7	74.9	^ 61.2	826.4
June	249.6	162.5	285.7	188.8	58.2	245.5	^ 107.0	1 297.3
September	^ 159.1	30.0	165.8	63.9	115.7	104.2	^ 67.4	706.0
VALUE OF WORK DONE DURING PERIOD								
2007-08	747.1	184.8	475.9	179.6	262.4	604.9	146.7	2 601.5
2008-09	1 143.4	197.6	743.6	554.2	224.7	593.0	161.6	3 618.0
2009-10	971.2	462.5	1 082.3	1 175.3	198.2	485.6	323.7	4 698.9
2009								
June	305.2	56.1	225.1	411.0	61.9	^ 104.8	^ 39.8	1 203.9
September	^ 206.6	98.4	232.6	249.0	37.5	123.5	* 80.0	1 027.7
December	240.9	97.5	303.5	343.7	49.1	140.2	* 77.6	1 252.6
2010								
March	239.4	145.0	273.9	250.6	48.6	94.7	^ 64.7	1 116.9
June	284.3	121.6	272.2	332.0	63.1	127.2	^ 101.3	1 301.7
September	^ 210.9	77.8	205.8	119.1	117.2	123.3	^ 71.2	925.3
VALUE OF WORK YET TO BE DONE								
2007-08	150.1	124.5	192.0	19.3	40.9	812.4	26.6	1 365.7
2008-09	194.3	194.1	527.5	1 262.8	7.5	351.8	18.7	2 556.7
2009-10	120.6	142.6	276.6	611.0	19.7	404.0	23.9	1 598.3
2009								
June	194.3	194.1	527.5	1 262.8	7.5	351.8	18.7	2 556.7
September	^ 212.8	145.3	579.2	1 217.2	0.8	405.7	* 49.4	2 610.5
December	^ 162.1	133.8	416.0	842.4	22.1	308.9	^ 32.4	1 917.7
2010								
March	^ 159.8	99.6	254.1	728.9	25.5	284.2	^ 20.9	1 573.1
June	^ 120.6	142.6	276.6	611.0	19.7	404.0	^ 23.9	1 598.3
September	* 192.9	94.8	245.0	481.5	* 19.0	400.2	^ 35.2	1 468.7

^ estimate has a relative standard error of 10% to less than 25% and should be used with caution

* estimate has a relative standard error of 25% to 50% and should be used with caution

** estimate has a relative standard error greater than 50% and is considered too unreliable for general use

<i>Period</i>	<i>Roads, highways and subdivisions</i>	<i>Bridges, railways and harbours</i>	<i>Electricity generation, transmission etc. and pipelines</i>	<i>Water storage and supply, sewerage and drainage</i>	<i>Telecom- munications</i>	<i>Heavy industry</i>	<i>Recreation and other</i>	<i>Total</i>
<i>\$m</i>	<i>\$m</i>	<i>\$m</i>	<i>\$m</i>	<i>\$m</i>	<i>\$m</i>	<i>\$m</i>	<i>\$m</i>	<i>\$m</i>
VALUE OF WORK COMMENCED DURING PERIOD								
2007-08	1 930.7	1 477.1	1 490.5	520.8	418.8	21 858.9	646.4	28 343.2
2008-09	2 729.4	2 891.2	3 069.4	1 007.4	344.7	7 107.5	1 833.1	18 982.7
2009-10	1 913.8	1 085.7	2 428.2	1 698.5	299.1	46 829.4	883.1	55 137.9
2009								
June	*501.4	306.0	418.9	^ 70.8	^ 113.7	1 288.8	^ 198.0	2 897.8
September	436.6	307.8	683.9	1 050.2	63.2	1 351.5	328.5	4 221.7
December	413.7	98.9	357.7	276.2	89.1	42 458.2	^ 237.7	43 931.6
2010								
March	464.8	557.4	606.8	^ 95.1	64.9	2 428.2	^ 124.4	4 341.7
June	598.7	121.6	779.8	*277.0	81.9	591.4	^ 192.5	2 642.9
September	502.4	1 652.4	384.8	^ 189.7	71.9	2 458.1	^ 138.7	5 397.9
VALUE OF WORK DONE DURING PERIOD								
2007-08	2 110.4	2 356.8	2 170.3	619.9	417.3	11 475.8	408.7	19 559.2
2008-09	2 596.3	2 266.5	2 417.2	667.8	336.9	13 384.3	995.2	22 664.2
2009-10	2 161.3	2 311.5	2 590.1	1 060.1	285.8	14 526.5	1 302.8	24 238.1
2009								
June	^ 608.3	544.2	688.4	^ 155.3	109.7	3 729.6	^ 220.6	6 056.2
September	404.8	573.0	614.3	^ 184.1	69.2	3 421.7	498.0	5 765.2
December	540.7	597.0	623.8	^ 189.3	66.4	3 678.4	^ 314.5	6 010.2
2010								
March	557.9	513.2	740.4	309.9	61.7	2 995.4	^ 260.4	5 438.8
June	657.8	628.3	611.5	376.8	88.5	4 431.1	^ 229.9	7 023.9
September	492.5	573.2	399.3	396.5	75.6	4 018.6	202.2	6 157.8
VALUE OF WORK YET TO BE DONE								
2007-08	476.8	1 953.9	427.7	181.1	9.7	20 972.3	180.2	24 201.7
2008-09	770.7	2 364.2	1 268.2	590.5	30.8	14 612.6	941.0	20 578.0
2009-10	498.4	1 678.0	951.0	997.5	23.7	47 397.3	697.3	52 243.1
2009								
June	^ 770.7	2 364.2	1 268.2	590.5	30.8	14 612.6	941.0	20 578.0
September	878.4	2 301.9	1 301.4	1 471.6	16.2	12 733.5	758.5	19 461.5
December	^ 833.3	1 884.1	1 015.8	1 307.1	28.1	51 682.2	798.5	57 549.0
2010								
March	687.7	1 977.3	846.8	1 115.3	31.1	51 013.1	667.7	56 339.1
June	498.4	1 678.0	951.0	997.5	23.7	47 397.3	697.3	52 243.1
September	445.8	2 821.8	1 058.0	^ 788.7	^ 19.9	45 906.3	646.8	51 687.4

^ estimate has a relative standard error of 10% to less than 25% and should be used with caution

* estimate has a relative standard error of 25% to 50% and should be used with caution

<i>Period</i>	<i>Roads, highways and subdivisions</i>	<i>Bridges, railways and harbours</i>	<i>Electricity generation, transmission etc. and pipelines</i>	<i>Water storage and supply, sewerage and drainage</i>	<i>Telecom- munications</i>	<i>Heavy industry</i>	<i>Recreation and other</i>	<i>Total</i>
<i>\$m</i>	<i>\$m</i>	<i>\$m</i>	<i>\$m</i>	<i>\$m</i>	<i>\$m</i>	<i>\$m</i>	<i>\$m</i>	<i>\$m</i>
VALUE OF WORK COMMENCED DURING PERIOD								
2007-08	190.1	35.4	327.3	69.1	154.4	81.3	50.8	908.4
2008-09	191.7	25.9	634.9	142.8	79.9	105.3	110.1	1 290.6
2009-10	272.1	41.5	297.9	95.2	69.6	59.0	83.7	919.0
2009								
June	^ 36.1	*5.7	436.3	^ 34.2	25.5	23.9	^ 12.6	574.3
September	^ 46.4	^ 15.7	29.5	*29.0	16.3	15.8	^ 23.9	176.6
December	69.3	^ 5.4	116.3	8.6	17.1	18.7	**35.4	270.8
2010								
March	123.7	16.2	72.9	16.7	17.1	10.8	*14.9	272.2
June	32.7	^ 4.2	79.2	*41.0	19.0	13.7	*9.6	199.4
September	41.3	^ 5.6	71.3	29.5	29.2	21.3	*17.9	216.1
VALUE OF WORK DONE DURING PERIOD								
2007-08	181.1	37.2	253.0	74.2	155.9	93.2	42.5	837.2
2008-09	202.9	28.4	390.3	130.1	80.4	87.0	81.1	1 000.1
2009-10	187.6	31.8	384.9	148.4	66.5	61.3	83.6	964.1
2009								
June	54.7	^ 7.7	79.3	^ 49.8	25.6	18.0	31.1	266.1
September	^ 31.3	*5.7	83.8	^ 47.1	16.3	19.8	^ 15.7	219.6
December	41.9	^ 6.5	121.4	33.1	11.0	15.2	*26.0	255.2
2010								
March	52.4	^ 7.9	90.6	29.6	19.7	13.1	*23.9	237.0
June	62.0	^ 11.7	89.1	^ 38.7	19.5	13.3	*18.1	252.3
September	50.4	^ 8.8	57.6	30.5	28.2	14.6	*16.1	206.3
VALUE OF WORK YET TO BE DONE								
2007-08	25.1	5.2	114.7	20.6	2.5	32.2	5.8	206.2
2008-09	19.3	2.7	562.2	34.4	—	43.8	31.7	694.1
2009-10	87.1	15.5	478.8	142.6	2.7	51.1	8.7	786.6
2009								
June	^ 19.3	*2.7	562.2	34.4	—	43.8	31.7	694.1
September	^ 42.1	^ 13.6	512.0	41.6	—	42.8	^ 22.8	674.9
December	53.2	9.5	504.1	74.1	5.9	40.9	**29.8	717.4
2010								
March	126.0	^ 22.0	488.3	92.2	3.2	51.1	*18.3	801.1
June	87.1	^ 15.5	478.8	142.6	2.7	51.1	*8.7	786.6
September	101.0	12.1	513.6	253.5	3.7	36.3	*10.2	930.5

^ estimate has a relative standard error of 10% to less than 25% and should be used with caution

* estimate has a relative standard error of 25% to 50% and should be used with caution

** estimate has a relative standard error greater than 50% and is considered too unreliable for general use

— nil or rounded to zero (including null cells)

	<i>Roads, highways and subdivisions</i>	<i>Bridges, railways and harbours</i>	<i>Electricity generation, transmission etc. and pipelines</i>	<i>Water storage and supply, sewerage and drainage</i>	<i>Telecom- munications</i>	<i>Heavy industry</i>	<i>Recreation and other</i>	Total
<i>Period</i>	\$m	\$m	\$m	\$m	\$m	\$m	\$m	\$m
VALUE OF WORK COMMENCED DURING PERIOD								
2007-08	164.3	161.1	272.5	30.6	140.1	1 314.7	56.9	2 140.2
2008-09	201.2	20.2	36.7	66.8	100.9	1 280.0	92.8	1 798.7
2009-10	90.5	20.5	19.8	57.1	188.9	1 059.2	103.0	1 539.1
2009								
June	^ 79.6	**3.5	10.7	**6.3	30.9	^ 462.1	^ 22.0	^ 615.1
September	22.9	*5.3	*5.9	**9.0	^ 20.8	^ 204.1	19.4	^ 287.5
December	*31.6	^ 2.4	5.8	*11.9	110.6	150.7	^ 30.3	343.5
2010								
March	14.9	**12.2	5.1	**11.1	36.2	49.5	20.4	149.4
June	*21.1	*0.6	3.0	*25.1	21.3	654.9	32.9	758.8
September	^ 34.9	12.5	3.2	^ 19.0	24.3	74.9	19.4	188.2
VALUE OF WORK DONE DURING PERIOD								
2007-08	136.6	59.9	71.5	67.9	139.6	748.1	56.0	1 279.6
2008-09	124.7	55.8	110.2	66.7	101.0	2 109.6	89.2	2 657.2
2009-10	151.8	31.4	25.4	54.6	97.9	704.2	104.0	1 169.3
2009								
June	*40.6	*11.9	14.5	**6.5	31.0	^ 520.2	^ 23.5	^ 648.0
September	37.9	**11.1	^ 9.2	**9.8	19.8	^ 299.6	21.8	^ 409.2
December	44.7	*8.1	8.9	*13.8	19.6	171.0	^ 33.2	299.4
2010								
March	31.7	^ 5.0	4.3	**9.3	25.3	54.7	21.2	151.5
June	^ 37.4	7.2	3.0	*21.6	33.2	178.9	27.8	309.1
September	^ 52.4	5.5	3.9	*18.0	^ 30.6	105.2	23.8	239.3
VALUE OF WORK YET TO BE DONE								
2007-08	31.7	55.0	153.2	12.2	—	1 022.6	0.8	1 275.6
2008-09	96.7	19.8	7.4	2.2	0.2	364.2	5.8	496.4
2009-10	45.5	5.2	4.2	8.4	90.8	487.5	14.6	656.3
2009								
June	96.7	*19.8	7.4	2.2	0.2	364.2	*5.8	496.4
September	89.9	**10.2	7.9	3.2	**1.2	184.1	^ 7.2	303.7
December	87.0	*5.1	4.5	3.7	93.5	173.0	*4.9	371.6
2010								
March	61.6	**13.3	4.5	4.5	104.2	160.4	*2.8	351.2
June	45.5	5.2	4.2	8.4	90.8	487.5	^ 14.6	656.3
September	39.4	13.3	3.4	25.2	*89.5	476.6	^ 13.9	661.3
^ estimate has a relative standard error of 10% to less than 25% and should be used with caution * estimate has a relative standard error of 25% to 50% and should be used with caution ** estimate has a relative standard error greater than 50% and is considered too unreliable for general use — nil or rounded to zero (including null cells)								

	Roads, highways and subdivisions	Bridges, railways and harbours	Electricity generation, transmission etc. and pipelines	Water storage and supply, sewerage and drainage	Telecom- munications	Heavy industry	Recreation and other	Total
Period	\$m	\$m	\$m	\$m	\$m	\$m	\$m	\$m
VALUE OF WORK COMMENCED DURING PERIOD								
2007-08	78.7	16.1	89.6	102.2	65.5	0.7	48.9	401.6
2008-09	83.3	7.9	140.0	264.8	66.0	0.3	44.9	607.1
2009-10	42.5	0.6	65.3	368.5	80.9	0.1	24.9	582.9
2009								
June	^ 11.9	—	**55.1	*38.7	14.5	0.2	*8.3	*128.8
September	2.0	—	18.3	313.6	16.9	—	*5.8	356.7
December	8.3	—	17.4	19.4	22.2	—	*7.9	75.2
2010								
March	17.9	0.3	19.0	^ 18.4	22.3	—	*6.6	84.6
June	14.2	0.3	10.6	17.2	19.5	—	*4.6	66.5
September	*17.4	—	41.8	^ 5.6	18.1	—	*4.7	87.6
VALUE OF WORK DONE DURING PERIOD								
2007-08	77.7	23.1	66.6	91.4	66.0	0.4	44.5	369.8
2008-09	82.6	7.8	63.2	100.7	66.9	0.1	42.5	363.8
2009-10	27.4	0.5	83.4	188.5	81.5	0.1	23.0	404.4
2009								
June	^ 10.0	—	*21.8	*37.2	14.8	—	*8.4	^ 92.3
September	3.8	—	24.0	29.6	17.3	—	*3.6	78.4
December	3.9	—	19.7	37.5	22.0	—	*8.2	91.3
2010								
March	5.4	0.2	16.1	55.3	22.5	—	*7.0	106.5
June	14.4	0.3	23.6	66.2	19.7	—	*4.1	128.3
September	*26.1	—	24.4	90.0	18.1	—	*4.6	163.3
VALUE OF WORK YET TO BE DONE								
2007-08	16.3	—	1.8	7.3	1.9	0.1	5.5	33.0
2008-09	8.2	—	9.6	164.8	1.1	—	1.9	185.6
2009-10	11.5	0.3	10.7	417.4	0.5	—	0.9	441.3
2009								
June	*8.2	—	9.6	164.8	1.1	—	**1.9	185.6
September	0.9	—	6.8	452.7	0.7	—	^ 2.4	463.5
December	5.4	—	7.8	531.5	0.9	—	2.2	548.0
2010								
March	18.1	0.1	11.9	466.5	0.7	—	*0.2	497.6
June	11.5	0.3	10.7	417.4	0.5	—	0.9	441.3
September	*36.3	—	19.0	473.0	*0.4	—	*0.1	528.8

^ estimate has a relative standard error of 10% to less than 25% and should be used with caution

* estimate has a relative standard error of 25% to 50% and should be used with caution

** estimate has a relative standard error greater than 50% and is considered too unreliable for general use

— nil or rounded to zero (including null cells)

VALUE OF WORK DONE BY THE PRIVATE SECTOR, States and territories: Original

	NSW	Vic.	Qld	SA	WA	Tas.	NT	ACT	Aust.
Period	\$m	\$m	\$m	\$m	\$m	\$m	\$m	\$m	\$m
BY THE PRIVATE SECTOR FOR THE PRIVATE SECTOR									
2007-08	5 528.6	5 075.4	8 051.7	1 750.8	16 705.8	448.1	1 137.0	259.1	38 956.6
2008-09	6 905.4	5 339.0	11 602.1	1 888.7	19 449.0	441.3	2 473.9	216.8	48 316.2
2009-10	6 148.2	6 373.1	10 915.3	2 089.5	20 159.6	286.0	936.9	203.3	47 111.9
2009									
June	2 090.1	1 531.8	2 927.8	475.0	5 246.2	105.3	^ 589.9	^ 50.0	13 016.1
September	1 480.3	1 461.9	2 904.0	484.7	4 906.4	77.2	^ 348.8	46.8	11 710.1
December	1 500.2	1 759.5	2 694.1	583.1	5 083.4	77.7	240.4	52.8	11 991.4
2010									
March	1 486.1	1 405.3	2 609.7	488.2	4 291.6	60.9	111.0	51.0	10 503.8
June	1 681.5	1 746.3	2 707.4	533.6	5 878.2	70.2	236.7	52.7	12 906.7
September	1 466.5	1 667.5	3 085.9	487.0	5 352.7	61.5	165.0	59.8	12 345.9
BY THE PRIVATE SECTOR FOR THE PUBLIC SECTOR									
2007-08	2 463.7	1 632.1	4 854.1	362.5	1 165.7	132.7	124.6	110.7	10 846.1
2008-09	3 863.4	2 231.4	5 458.8	847.7	1 491.3	154.4	166.9	147.0	14 360.8
2009-10	3 973.4	2 503.7	4 484.6	1 486.6	1 573.2	257.3	219.7	201.1	14 699.7
2009									
June	946.2	610.7	1 303.6	431.0	344.5	41.0	*53.9	*42.3	3 773.2
September	1 102.3	658.8	1 274.9	347.7	358.3	^ 40.1	^ 57.1	31.6	3 870.8
December	1 037.8	552.7	1 214.8	436.0	*371.0	56.7	54.6	38.4	3 762.1
2010									
March	849.5	565.0	970.0	314.5	*427.6	82.9	38.2	55.5	3 303.1
June	983.9	727.2	1 024.9	388.4	^ 416.2	77.7	^ 69.9	75.6	3 763.7
September	877.4	835.5	1 133.8	^ 278.1	320.8	72.4	^ 73.0	103.6	3 694.6
TOTAL BY THE PRIVATE SECTOR									
2007-08	7 992.3	6 707.5	12 905.8	2 113.3	17 871.6	580.8	1 261.6	369.8	49 802.7
2008-09	10 768.8	7 570.4	17 060.8	2 736.4	20 940.3	595.7	2 640.8	363.8	62 676.9
2009-10	10 121.6	8 876.8	15 399.9	3 576.1	21 732.8	543.4	1 156.6	404.4	61 811.6
2009									
June	3 036.3	2 142.5	4 231.4	906.1	5 590.7	146.3	^ 643.8	^ 92.3	16 789.3
September	2 582.6	2 120.7	4 178.9	832.4	5 264.7	117.2	^ 405.9	78.4	15 580.9
December	2 538.0	2 312.3	3 908.9	1 019.1	5 454.5	134.4	295.0	91.3	15 753.4
2010									
March	2 335.6	1 970.3	3 579.7	802.6	4 719.2	143.8	149.2	106.5	13 806.9
June	2 665.4	2 473.5	3 732.4	922.0	6 294.4	147.9	306.6	128.3	16 670.4
September	2 343.9	2 503.0	4 219.7	765.2	5 673.5	133.9	237.9	163.3	16 040.5

^ estimate has a relative standard error of 10% to less than 25% and should be used with caution

* estimate has a relative standard error of 25% to 50% and should be used with caution

	NSW	Vic.	Qld	SA	WA	Tas.	NT	ACT	Aust.
Period	\$m	\$m	\$m	\$m	\$m	\$m	\$m	\$m	\$m
TOTAL BY COMMONWEALTH GOVERNMENT									
2007-08	—	—	1.3	—	0.3	0.5	—	—	2.1
2008-09	—	—	0.6	3.2	1.3	0.6	—	—	5.8
2009-10	—	—	—	20.5	—	0.2	—	—	20.6
2009									
June	—	—	—	1.7	—	—	—	—	1.7
September	—	—	—	4.5	—	0.2	—	—	4.6
December	—	—	—	4.0	—	—	—	—	4.0
2010									
March	—	—	—	5.0	—	—	—	—	5.0
June	—	—	—	7.0	—	—	—	—	7.0
September	—	—	—	4.2	—	—	—	—	4.2
TOTAL BY STATE AND TERRITORY GOVERNMENT									
2007-08	3 210.8	315.0	2 256.0	314.2	1 314.5	169.3	—	—	7 579.7
2008-09	4 173.2	443.9	2 377.5	669.5	1 321.0	279.7	—	—	9 264.8
2009-10	4 639.6	323.5	2 419.0	906.7	1 982.1	299.4	—	—	10 570.3
2009									
June	1 117.7	156.8	710.3	224.8	345.7	74.7	—	—	2 630.1
September	1 150.0	123.8	653.9	149.5	441.6	62.8	—	—	2 581.6
December	1 073.2	68.8	641.2	187.3	428.6	94.4	—	—	2 493.6
2010									
March	1 138.4	70.8	492.6	256.9	591.8	63.4	—	—	2 613.8
June	1 278.0	60.2	631.3	313.0	520.1	78.8	—	—	2 881.3
September	1 199.4	44.0	531.1	124.3	394.3	45.9	—	—	2 339.1
BY LOCAL GOVERNMENT AUTHORITIES									
2007-08	1 138.6	301.7	1 623.6	173.9	372.9	86.6	18.0	—	3 715.4
2008-09	1 373.8	331.8	1 629.9	208.9	401.6	124.1	16.5	—	4 086.5
2009-10	1 375.7	340.6	1 759.8	195.6	523.2	121.2	12.6	—	4 328.6
2009									
June	^ 384.1	115.0	479.6	^ 71.4	119.9	^ 45.1	^ 4.2	—	1 219.2
September	^ 273.5	48.7	407.6	^ 41.3	58.9	*39.4	3.4	—	872.7
December	^ 343.2	68.2	428.8	^ 42.2	127.0	*26.4	4.4	—	1 040.3
2010									
March	^ 346.0	84.8	378.8	^ 52.3	^ 127.9	*29.9	2.3	—	1 021.9
June	413.0	138.8	544.7	^ 59.7	^ 209.5	*25.6	2.5	—	1 393.8
September	250.7	47.2	397.8	^ 31.6	^ 90.0	*26.4	1.4	—	845.3
TOTAL BY THE PUBLIC SECTOR									
2007-08	4 349.3	616.7	3 880.9	488.2	1 687.6	256.4	18.0	—	11 297.1
2008-09	5 547.0	775.6	4 008.1	881.6	1 723.9	404.4	16.5	—	13 357.0
2009-10	6 015.3	664.1	4 178.8	1 122.7	2 505.3	420.7	12.6	—	14 919.6
2009									
June	1 501.8	271.8	1 189.9	297.9	465.5	119.8	^ 4.2	—	3 851.0
September	1 423.5	172.5	1 061.5	195.3	500.5	^ 102.3	3.4	—	3 459.0
December	1 416.4	137.0	1 070.0	233.5	555.7	120.8	4.4	—	3 537.8
2010									
March	1 484.4	155.5	871.3	314.2	719.6	^ 93.3	2.3	—	3 640.8
June	1 691.0	199.0	1 176.0	379.7	729.6	104.3	2.5	—	4 282.0
September	1 450.1	91.3	928.9	160.1	484.4	^ 72.4	1.4	—	3 188.6

^ estimate has a relative standard error of 10% to less than 25% and should be used with caution

* estimate has a relative standard error of 25% to 50% and should be used with caution

— nil or rounded to zero (including null cells)

(a) Includes construction work done by public sector organisations with their own workforce only. All work contracted out by public sector organisations to the private sector appears in 'By private for public sector' totals.

VALUE OF WORK DONE FOR THE PUBLIC SECTOR(a), States and territories: **Original**

	NSW	Vic.	Qld	SA	WA	Tas.	NT	ACT	Aust.
Period	\$m	\$m	\$m	\$m	\$m	\$m	\$m	\$m	\$m
BY THE PRIVATE SECTOR FOR THE PUBLIC SECTOR									
2007-08	2 463.7	1 632.1	4 854.1	362.5	1 165.7	132.7	124.6	110.7	10 846.1
2008-09	3 863.4	2 231.4	5 458.8	847.7	1 491.3	154.4	166.9	147.0	14 360.8
2009-10	3 973.4	2 503.7	4 484.6	1 486.6	1 573.2	257.3	219.7	201.1	14 699.7
2009									
June	946.2	610.7	1 303.6	431.0	344.5	41.0	*53.9	*42.3	3 773.2
September	1 102.3	658.8	1 274.9	347.7	358.3	^ 40.1	^ 57.1	31.6	3 870.8
December	1 037.8	552.7	1 214.8	436.0	*371.0	56.7	54.6	38.4	3 762.1
2010									
March	849.5	565.0	970.0	314.5	*427.6	82.9	38.2	55.5	3 303.1
June	983.9	727.2	1 024.9	388.4	^ 416.2	77.7	^ 69.9	75.6	3 763.7
September	877.4	835.5	1 133.8	^ 278.1	320.8	72.4	^ 73.0	103.6	3 694.6
TOTAL BY THE PUBLIC SECTOR									
2007-08	4 349.3	616.7	3 880.9	488.2	1 687.6	256.4	18.0	—	11 297.1
2008-09	5 547.0	775.6	4 008.1	881.6	1 723.9	404.4	16.5	—	13 357.0
2009-10	6 015.3	664.1	4 178.8	1 122.7	2 505.3	420.7	12.6	—	14 919.6
2009									
June	1 501.8	271.8	1 189.9	297.9	465.5	119.8	^ 4.2	—	3 851.0
September	1 423.5	172.5	1 061.5	195.3	500.5	^ 102.3	3.4	—	3 459.0
December	1 416.4	137.0	1 070.0	233.5	555.7	120.8	4.4	—	3 537.8
2010									
March	1 484.4	155.5	871.3	314.2	719.6	^ 93.3	2.3	—	3 640.8
June	1 691.0	199.0	1 176.0	379.7	729.6	104.3	2.5	—	4 282.0
September	1 450.1	91.3	928.9	160.1	484.4	^ 72.4	1.4	—	3 188.6
TOTAL FOR THE PUBLIC SECTOR									
2007-08	6 813.1	2 248.8	8 735.0	850.7	2 853.3	389.1	142.6	110.7	22 143.2
2008-09	9 410.4	3 007.0	9 466.8	1 729.3	3 215.2	558.8	183.3	147.0	27 717.8
2009-10	9 988.7	3 167.8	8 663.4	2 609.4	4 078.5	678.0	232.4	201.1	29 619.3
2009									
June	2 448.0	882.5	2 493.5	728.9	810.1	160.8	*58.1	*42.3	7 624.2
September	2 525.8	831.4	2 336.4	543.0	858.8	^ 142.4	^ 60.4	31.6	7 329.8
December	2 454.2	689.8	2 284.8	669.6	^ 926.7	177.5	59.0	38.4	7 299.9
2010									
March	2 333.9	720.5	1 841.3	628.7	^ 1 147.3	176.2	40.5	55.5	6 943.9
June	2 674.8	926.1	2 200.9	768.1	1 145.7	182.0	^ 72.4	75.6	8 045.7
September	2 327.6	926.8	2 062.8	438.3	805.1	144.7	^ 74.4	103.6	6 883.1

^ estimate has a relative standard error of 10% to less than 25% and should be used with caution

* estimate has a relative standard error of 25% to 50% and should be used with caution

— nil or rounded to zero (including null cells)

(a) Excludes construction work done for the public sector where the asset will be owned by the private sector on completion of the project. See paragraph 10 of the Explanatory Notes for further information.

BY THE PRIVATE SECTOR

	<i>For the private sector</i>	<i>For the public sector</i>	<i>Total</i>	<i>By the public sector</i>	<i>Total for the public sector(a)</i>	<i>Total</i>
	%	%	%	%	%	%
VALUE OF WORK COMMENCED						
Roads, highways and subdivisions	10.1	5.1	5.1	4.8	3.8	3.9
Bridges	21.3	13.1	12.6	2.0	8.2	8.0
Railways	1.2	4.6	2.0	—	1.7	1.4
Harbours	1.1	39.2	1.6	—	32.7	1.6
Water storage and supply	10.2	2.4	7.4	16.2	11.4	7.5
Sewerage and drainage	17.8	16.8	11.5	14.7	10.4	8.9
Electricity generation, transmission and distribution	1.2	16.3	1.7	—	1.3	0.9
Pipelines	16.9	18.7	16.3	13.0	16.6	16.3
Recreation	25.8	24.9	23.3	4.9	7.3	18.3
Telecommunications	1.8	5.8	1.9	—	5.7	1.9
Oil, gas, coal and other minerals	1.8	76.0	1.8	—	76.0	1.8
Other heavy industry	1.2	—	1.2	—	—	1.2
Other	22.4	58.3	22.5	—	38.7	21.6
Total	2.0	4.3	1.8	3.3	2.7	1.6

VALUE OF WORK DONE

Roads, highways and subdivisions	5.4	7.6	5.4	2.6	5.5	4.4
Bridges	56.9	5.9	7.4	8.0	5.1	6.2
Railways	1.6	0.6	0.8	—	0.3	0.6
Harbours	4.6	8.7	4.2	1.2	7.9	4.1
Water storage and supply	4.5	3.5	3.2	5.4	2.9	2.6
Sewerage and drainage	8.3	13.6	9.6	8.5	8.7	6.9
Electricity generation, transmission and distribution	1.7	9.6	1.9	—	1.0	0.9
Pipelines	3.7	39.3	3.7	10.3	29.4	3.7
Recreation	12.7	23.3	11.1	5.4	8.2	8.7
Telecommunications	0.7	21.2	2.4	—	20.9	2.4
Oil, gas, coal and other minerals	0.6	37.6	0.6	—	37.6	0.6
Other heavy industry	1.4	—	1.4	—	—	1.4
Other	9.1	51.9	10.5	—	45.7	10.4
Total	0.9	4.6	1.4	1.2	2.5	1.2

VALUE OF WORK YET TO BE DONE

Roads, highways and subdivisions	3.9	5.0	4.1	4.7	4.5	3.8
Bridges	76.6	3.6	4.2	1.4	2.9	3.3
Railways	—	1.6	0.9	—	1.6	0.9
Harbours	1.0	6.3	1.1	0.1	2.5	0.9
Water storage and supply	2.2	0.8	1.7	11.7	4.1	2.2
Sewerage and drainage	15.9	14.8	13.6	17.4	11.0	10.3
Electricity generation, transmission and distribution	4.1	4.3	3.8	—	1.2	3.1
Pipelines	2.5	17.6	2.5	—	16.6	2.5
Recreation	34.8	10.0	29.1	3.3	3.1	14.5
Telecommunications	12.7	23.7	20.8	—	23.7	20.8
Oil, gas, coal and other minerals	—	4.6	—	—	4.6	—
Other heavy industry	4.3	—	4.3	—	—	4.3
Other	3.5	22.0	3.8	—	17.9	3.8
Total	0.3	3.6	0.7	4.9	3.0	0.7

— nil or rounded to zero (including null cells)

(a) Includes work done by the private sector for the public sector and work done by the public sector.

RELATIVE STANDARD ERRORS, States and territories, By type of work

	<i>Roads, highways and subdivisions</i>	<i>Bridges, railways and harbours</i>	<i>Electricity generation, transmission etc. and pipelines</i>	<i>Water storage and supply, sewerage and drainage</i>	<i>Telecom- munications</i>	<i>Heavy industry</i>	<i>Recreation and other</i>	Total
	%	%	%	%	%	%	%	%
VALUE OF WORK COMMENCED								
NSW	3.4	4.3	2.7	16.2	3.5	—	37.1	4.1
Vic.	13.6	6.1	2.2	22.2	1.7	12.5	23.2	5.1
Qld	6.8	6.3	2.0	10.2	1.8	5.8	20.4	3.5
SA	19.0	3.1	2.5	4.6	1.5	0.8	16.5	4.6
WA	5.7	0.1	1.1	23.5	2.4	0.2	11.1	1.0
Tas.	6.1	19.8	—	7.9	0.1	—	46.5	4.7
NT	19.3	2.8	—	12.1	9.9	4.7	5.9	4.5
ACT	43.7	—	—	15.3	0.4	—	40.0	8.7
Total	3.9	1.1	1.2	6.6	1.9	1.8	15.6	1.6
VALUE OF WORK DONE								
NSW	7.1	2.3	1.8	5.4	2.0	—	19.0	2.2
Vic.	13.3	4.0	2.9	7.2	1.8	12.2	20.8	4.2
Qld	3.6	4.3	0.6	5.9	3.5	1.9	14.6	1.9
SA	21.9	1.2	1.1	3.0	1.9	1.4	18.5	5.1
WA	4.6	1.3	1.1	7.2	2.8	0.1	6.2	0.6
Tas.	5.1	13.5	—	7.3	0.1	—	47.9	4.6
NT	14.2	6.3	—	27.2	13.4	3.3	4.9	5.1
ACT	36.4	—	—	1.0	0.4	—	40.2	5.9
Total	4.4	1.3	0.9	2.7	2.4	0.6	7.1	1.2
VALUE OF WORK YET TO BE DONE								
NSW	4.0	3.5	2.1	21.4	18.7	—	34.1	3.0
Vic.	8.5	1.8	8.5	7.0	11.9	6.9	9.2	4.6
Qld	5.5	1.1	2.1	5.3	24.4	0.2	8.5	2.2
SA	34.2	—	2.5	0.8	26.6	0.1	15.1	4.6
WA	5.6	0.5	0.3	10.0	22.9	—	0.9	0.2
Tas.	4.1	9.7	—	0.3	—	—	45.7	0.7
NT	3.0	—	—	—	26.9	—	14.3	3.7
ACT	41.7	—	—	—	25.2	—	29.5	2.9
Total	3.8	0.7	2.9	3.5	20.8	—	6.8	0.7

— nil or rounded to zero (including null cells)

EXPLANATORY NOTES

INTRODUCTION

1 This publication contains estimates of engineering construction activity in Australia by both public and private sector organisations. The estimates were compiled from the Engineering Construction Survey (ECS).

2 These estimates together with results from the Australian Bureau of Statistics (ABS) Building Activity Survey provide a complete quarterly picture of building and construction activity in Australia.

SCOPE AND COVERAGE

3 The ECS aims to measure the value of all engineering construction work undertaken in Australia. This value excludes the cost of land and repair and maintenance activity, as well as the value of any transfers of existing assets, the value of installed machinery and equipment not integral to the structure and the expenses for relocation of utility services. However, a contract for the installation of machinery and equipment which is an integral part of a construction project is included.

4 Where projects include elements of both building and engineering construction (for example, electricity generation, heavy industrial plant) every effort is taken to exclude the building component from these statistics.

5 From the September quarter 2002, engineering construction activity in the External Territories of Australia is included in these statistics. Jervis Bay is included in New South Wales, while Christmas Island and Cocos (Keeling) Islands are included in Western Australia.

STATISTICAL UNIT

6 In the Engineering Construction Survey, the statistical unit used to represent businesses, and for which statistics are reported, is the Australian Business Number (ABN) unit, in most cases. The ABN unit is the business unit which has registered for an ABN, and thus appears on the Australian Taxation Office (ATO) administered Australian Business Register. This unit is suitable for ABS statistical needs when the business is simple in structure. For more significant and diverse businesses where the ABN unit is not suitable for ABS statistical needs, the statistical unit used is the Type of Activity Unit (TAU). A TAU is comprised of one or more business entities, sub-entities or branches of a business entity within an Enterprise Group that can report production and employment data for similar economic activities. When a minimum set of data items is available, a TAU is created which covers all the operations within an industry subdivision (and the TAU is classified to the relevant subdivision of the *Australian and New Zealand Standard Industrial Classification (ANZSIC)*). Where a business cannot supply adequate data for each industry, a TAU is formed which contains activity in more than one industry subdivision and the TAU is classified to the predominant ANZSIC subdivision.

7 Further details about the ABS economic statistical units used in this survey, and in other ABS economic surveys (both sample surveys and censuses), can be found in Chapter 2 of the *Standard Economic Sector Classifications of Australia (SESCA) 2008* (cat. no. 1218.0).

RELATIONSHIP WITH NATIONAL ACCOUNTS

8 Data on the value of work done on the construction of new residential buildings, alterations and additions to residential buildings, private sector non-residential buildings (from *Building Activity, Australia* (cat. no. 8752.0)) and the value of engineering construction activity (from the Engineering Construction Survey) are the major source data which are used to compile the national accounts estimates for private gross fixed capital formation on dwellings, and other buildings and structures. However, there are some adjustments to the survey data which are made in the process of compiling these national account series. Allowances are made for the value of building activity which is out of scope of the Building Activity Survey and the Engineering Construction Survey. Such activity includes work done on projects which fall below the size cut-offs used for the Building Activity Survey and also the value of work done which is undertaken

EXPLANATORY NOTES *continued*

RELATIONSHIP WITH NATIONAL ACCOUNTS *continued*

without obtaining a building permit, either because such a permit is not required or because the requisite permit is not obtained. The national accounts estimates also make allowances for purchases (less sales) of buildings and other structures from (to) the public sector.

SAMPLE REVISION

9 The survey frames and samples are revised each quarter to ensure that they remain representative of the survey population. The timing for creating each quarter's survey frame is consistent with that of other ABS surveys. This provides for greater consistency when comparing data across surveys.

CLASSIFICATION

10 *Ownership.* Projects are classified as private sector or public sector according to the expected ownership of the project at the time of completion. When a project is undertaken as a Private Public Partnership (PPP), or other similar arrangement, these projects will be classified according to the expected ownership of the asset at the time of completion. Projects undertaken as PPP's may be classified as private sector although ownership of the asset could eventually reside with the public sector.

11 *Sector.* The public sector includes Commonwealth Departments and Authorities, State Departments and Authorities, Local Government Authorities, Water, Sewerage and Electricity Authorities and government owned businesses and Statutory Authorities. All remaining organisations are classified as private sector. This publication contains separate estimates for the private sector and:

Commonwealth Government
State and Territory Government
Local Government.

12 *Type of construction.* A project is classified to a category of construction without regard to end use. For example, a project involving coal handling equipment at an electricity generating plant is included under 'Heavy industry - Oil, gas, coal, bauxite, alumina and other minerals' and not under 'Electricity generation, transmission and distribution'. Where a project involves more than one category of construction the project is included under the category which accounts for the major part of the contract in terms of value.

RELIABILITY OF THE ESTIMATES

13 Since the estimates for private sector and public sector organisations are based on a sample of organisations they are subject to sampling error; that is, they may differ from the figures that would have been obtained if information for all organisations for the relevant period had been included in the survey. A measure of the likely difference is given by the relative standard error (RSE) of each estimate. There are about 2 chances in 3 that a sample estimate will differ by less than one standard error from the figure that would have been obtained if all units had been included, and about 19 chances in 20 that the difference will be less than 2 standard errors. Approximate RSEs of the estimates are shown in tables 28 and 29.

14 An example of the use of RSEs is as follows. If the total value of work done during the quarter is \$2,500m and the associated RSE is 0.5% then there are about 2 chances in 3 that the value which would have been obtained if there had been a complete collection would have been within the range \$2,488m to \$2,513m and about 19 chances in 20 that the value would have been within the range \$2,475m to \$2,525m.

15 Estimates that have an estimated relative standard error between 10% and 25% are annotated with the symbol '^'. These estimates should be used with caution as they are subject to sampling variability too high for some purposes. Estimates with an RSE between 25% and 50% are annotated with the symbol '*', indicating that the estimate should be used with caution as it is subject to sampling variability too high for most practical purposes. Estimates with an RSE greater than 50% are annotated with the

EXPLANATORY NOTES *continued*

RELIABILITY OF THE ESTIMATES *continued*

symbol ‘**’ indicating that the sampling variability causes the estimates to be considered too unreliable for general use.

16 The imprecision due to sampling variability, which is measured by the RSE, should not be confused with inaccuracies that may occur because of inadequacies in the source of information, imperfections in reporting by respondents, and errors made in the coding and processing of data. Inaccuracies of this kind are referred to as non-sampling error, and may occur in any enumeration whether it be a full count or only a sample. Every effort is made to reduce the non-sampling error to a minimum by the careful design of questionnaires, efforts to obtain responses for all selected organisations, and efficient operating procedures.

17 Caution is advised in respect of the value of work commenced (and consequently, the value of work yet to be done) reported by the public sector. It is known that data reported for value of work commenced are a combination of the following: annual works budget estimates which are reported as commencements in the September quarter (and in some cases may subsequently be undertaken by the private sector); genuine commencements as defined in the Glossary, and reported quarterly; commencements being reported as equal to the value of work done for the quarter; commencements of major stages in the case of long-term projects.

SEASONAL ADJUSTMENT

18 Since seasonally adjusted statistics reflect both irregular and trend movements, an upward or downward movement in a seasonally adjusted series does not necessarily indicate a change of trend. Particular care should therefore be taken in interpreting individual quarter to quarter movements.

19 From the June quarter 2003, the seasonally adjusted estimates are produced by the concurrent seasonal adjustment method which takes account of the latest available original estimates. The concurrent method improves the estimation of seasonal factors and, therefore, the seasonally adjusted and trend estimates for the current and previous quarters.

20 The revision properties of the seasonally adjusted and trend estimates have been improved by the use of autoregressive integrated moving average (ARIMA) modelling. ARIMA modelling relies on the characteristics of the series being analysed to project future period data. The ARIMA model is assessed as part of the annual reanalysis. For more information on the details of ARIMA modelling see feature article: *Use of ARIMA modelling to reduce revisions* in the October 2004 issue of Australian Economic Indicators (cat. no. 1350.0).

21 A more detailed review of concurrent seasonal factors will be conducted annually, generally prior to the release of data for the December quarter.

TREND ESTIMATES

22 Seasonally adjusted series can be smoothed to reduce the impact of the irregular component in the adjusted series. This smoothed seasonally adjusted series is called a trend estimate.

23 The trend estimates are derived by applying a 7-term Henderson moving average to the seasonally adjusted series. The 7-term Henderson average (like all Henderson averages) is symmetric but, as the end of a time series is approached, asymmetric forms of the average are applied. Unlike weights of the standard 7-term Henderson moving average, the weights employed here have been tailored to suit the particular characteristics of individual series.

24 While the smoothing technique described in paragraphs 22 and 23 enables trend estimates to be produced for recent quarters, it does result in revisions to the estimates for the most recent three quarters as additional observations become available. There may also be revisions because of changes in the original data and as a result of the re-estimation of the seasonal factors. For further information, see *Information Paper: A*

EXPLANATORY NOTES *continued*

TREND ESTIMATES *continued*

Guide to Interpreting Time Series—Monitoring Trends, 2003 (cat. no. 1349.0) or contact the Assistant Director, Time Series Analysis on Canberra (02) 6252 6540 or email <timeseries@abs.gov.au>.

CHAIN VOLUME MEASURES

25 Chain volume estimates of the value of work done are presented in original, seasonally adjusted and trend terms in tables 1, 2, 3 and 4.

26 While current price estimates of value of work done reflect both price and volume changes, chain volume estimates measure changes in value after the direct effects of price changes have been eliminated and therefore only reflect volume changes. The direct impact of the Goods and Service Tax is a price change, and hence is removed from chain volume estimates. The deflators used to revalue the current price estimates in this publication are derived from the same price data underlying the deflators compiled for the dwellings and new other building components, and the new engineering construction component, of the national accounts aggregate 'Gross fixed capital formation'.

27 The chain volume measures of work done appearing in this publication are annually reweighted chain Laspeyres indexes referenced to current price values in a chosen reference year. The reference year is updated annually in the September quarter publication. Each year's data in the value of work done series are based on the prices of the previous year, except for the quarters of the latest incomplete year which are based upon the current reference year. Comparability with previous years is achieved by linking (or chaining) the series together to form a continuous time series.

28 Chain volume measures do not, in general, sum exactly to the extrapolated total value of the components. Further information on the nature and concepts of chain volume measures is contained in the ABS *Information Paper: Introduction of Chain Volume Measures in the Australian National Accounts* (cat. no. 5248.0).

29 The factors used to seasonally adjust the chain volume measures are identical to those used to adjust the corresponding current price series.

ACKNOWLEDGMENT

30 ABS publications draw extensively on information provided freely by individuals, businesses, governments and other organisations. Their continued cooperation is very much appreciated: without it, the wide range of statistics published by the ABS would not be available. Information received by the ABS is treated in strict confidence as required by the *Census and Statistics Act 1905*.

RELATED PRODUCTS

31 Users may also wish to refer to the following publications:
Building Activity, Australia cat. no. 8752.0
Building Approvals, Australia cat. no. 8731.0
Construction Work Done, Australia, Preliminary cat. no. 8755.0
Dwelling Unit Commencements, Australia, Preliminary cat. no. 8750.0.

ABS DATA AVAILABLE ON REQUEST

32 As well as the statistics included in this and related publications, the ABS may have other relevant data available on request. Inquiries should be made to the National Information and Referral Service on 1300 135 070.

APPENDIX LIST OF ELECTRONIC TABLES

ELECTRONIC TABLES

The following tables are available electronically via the ABS web site. Not all series in the table go back to the earliest start date.

ENGINEERING CONSTRUCTION ACTIVITY

	<i>Publication table no.</i>	<i>Electronic table no.</i>	<i>Start date</i>
Value of work done: chain volume measures	1	1	September 1984
Value of work done: chain volume measures – change from previous period	2	n.a.	..
Value of work done, states and territories: chain volume measures	3	2	September 1986
Value of work done, states and territories: chain volume measures – change from previous period	4	n.a.	..
Value of work done: current prices	5	3	September 1986
Value of work done: current prices – change from previous period	6	n.a.	..
Value of work done, states and territories: current prices	7	4	September 1986
Value of work done, states and territories: current prices – change from previous period	8	n.a.	..
Activity, states and territories: original	9	5	September 1986
Activity, states and territories: original – change from previous period	10	n.a.	..
Activity, by type, Australia: original	11	6	September 1986
Work commenced by the private sector, by type, original	12	7	September 1986
Work done by the private sector, by type, original	13	8	September 1986
Work yet to be done by the private sector, by type, original	14	9	September 1986
Activity by the public sector, by type, original	15	10	September 1986
Activity for the public sector, by type, original	16	11	September 1986
Value of work commenced, by type and sector: original – New South Wales	17	12	September 1986
Value of work done, by type and sector: original – New South Wales	17	13	September 1986
Value of work yet to be done, by type and sector: original – New South Wales	17	14	September 1986
Value of work commenced, by type and sector: original – Victoria	18	15	September 1986
Value of work done, by type and sector: original – Victoria	18	16	September 1986
Value of work yet to be done, by type and sector: original – Victoria	18	17	September 1986
Value of work commenced, by type and sector: original – Queensland	19	18	September 1986
Value of work done, by type and sector: original – Queensland	19	19	September 1986
Value of work yet to be done, by type and sector: original – Queensland	19	20	September 1986
Value of work commenced, by type and sector: original – South Australia	20	21	September 1986
Value of work done, by type and sector: original – South Australia	20	22	September 1986
Value of work yet to be done, by type and sector: original – South Australia	20	23	September 1986
Value of work commenced, by type and sector: original – Western Australia	21	24	September 1986
Value of work done, by type and sector: original – Western Australia	21	25	September 1986
Value of work yet to be done, by type and sector: original – Western Australia	21	26	September 1986
Value of work commenced, by type and sector: original – Tasmania	22	27	September 1986
Value of work done, by type and sector: original – Tasmania	22	28	September 1986
Value of work yet to be done, by type and sector: original – Tasmania	22	29	September 1986
Value of work commenced, by type and sector: original – Northern Territory	23	30	September 1986
Value of work done, by type and sector: original – Northern Territory	23	31	September 1986
Value of work yet to be done, by type and sector: original – Northern Territory	23	32	September 1986
Value of work commenced, by type and sector: original – Australian Capital Territory	24	33	September 1986
Value of work done, by type and sector: original – Australian Capital Territory	24	34	September 1986
Value of work yet to be done, by type and sector: original – Australian Capital Territory	24	35	September 1986
Value of work done by the private sector, states and territories: original	25	36	September 1986
Value of work done by the public sector, states and territories: original	26	37	September 1986
Value of work done for the public sector, states and territories: original	27	38	September 1986

GLOSSARY

Activity	Activity refers to value of a specific stage of the construction undertaken, e.g. work commenced, work done or work yet to be done.
Bridges	Includes those for the support of roads, railways, causeways and elevated highways.
Commencements (value of work commenced)	<p>A project is regarded as having commenced when the site works begin, with the following exceptions:</p> <ul style="list-style-type: none"> ■ Some public sector authorities are unable to report on this basis. In such cases, the authorities report the value of their annual works budget in September quarter each year. ■ For very large projects, where a significant amount of work is done off-site, the project may be commenced before the site works begin.
Electricity generation, transmission and distribution	Includes power stations; substations; hydro-electric generating plants; associated work i.e. towers; chimneys; transmission and distribution lines.
Harbours	Includes boat and yacht basins; breakwaters; retaining walls; docks and piers; terminals; wharves; dredging works; marinas.
Heavy industry	This category is the total of 'Oil, gas, coal, bauxite, alumina and other minerals' and 'Other heavy industry'.
Oil, gas, coal, bauxite, alumina and other minerals	Includes construction of production, storage and distribution facilities; refineries; pumping stations; construction of mines.
Other heavy industry	Includes construction of chemical plants; blast furnaces; steel mills; other industrial processing plants; ovens.
Pipelines	Includes oil and gas pipelines; urban supply mains for gas; pipelines for refined petroleum products, chemicals, foodstuffs, etc.
Railways	Includes tracklaying; overhead power lines and signals; platforms; tramways; tunnels for underground railways; fuel hoppers.
Recreation	Includes golf courses; playing fields; racecourses; stadiums; swimming pools; landscaping; park construction.
Roads, highways and subdivisions	Includes parking areas; cycle paths; airport runways; pedestrian and vehicle overpasses; traffic lights; roundabouts; associated road drainage works; street and highway lighting; road resurfacing, kerbing and guttering, road tunnels.
Sewerage and drainage	Includes sanitary and storm sewers; sewage treatment plants; stormwater drains; drainage systems.
Telecommunications	Includes mobile phone, radio, television, microwave and radar transmission towers; telephone lines and underground cables; coaxial cables.
Type	Type refers to the category of construction undertaken, e.g. Roads, highways and subdivisions; Bridges; Railways; etc.
Value of work done	The value of work done for the private sector consists of the value of work done on prime contracts, plus speculative contracts, plus work done on own account. The value of work done for the public sector is the work done by the organisation's own workforce and subcontractors.
Value of work yet to be done	The value of outstanding work for the project at the end of the period. Rise and fall and other cost variations can lead to increases or decreases in the value of work yet to be done.
Water storage and supply	Includes dams; weirs; reservoirs; embankments for water diversion; water pipelines; mains and treatment plants; flood prevention and erosion; aqueducts; water conduits; systems conveying water to residences, commercial and industrial establishments.

FOR MORE INFORMATION . . .

INTERNET **www.abs.gov.au** the ABS website is the best place for data from our publications and information about the ABS.

INFORMATION AND REFERRAL SERVICE

Our consultants can help you access the full range of information published by the ABS that is available free of charge from our website. Information tailored to your needs can also be requested as a 'user pays' service. Specialists are on hand to help you with analytical or methodological advice.

PHONE 1300 135 070

EMAIL client.services@abs.gov.au

FAX 1300 135 211

POST Client Services, ABS, GPO Box 796, Sydney NSW 2001

FREE ACCESS TO STATISTICS

All statistics on the ABS website can be downloaded free of charge.

WEB ADDRESS **www.abs.gov.au**